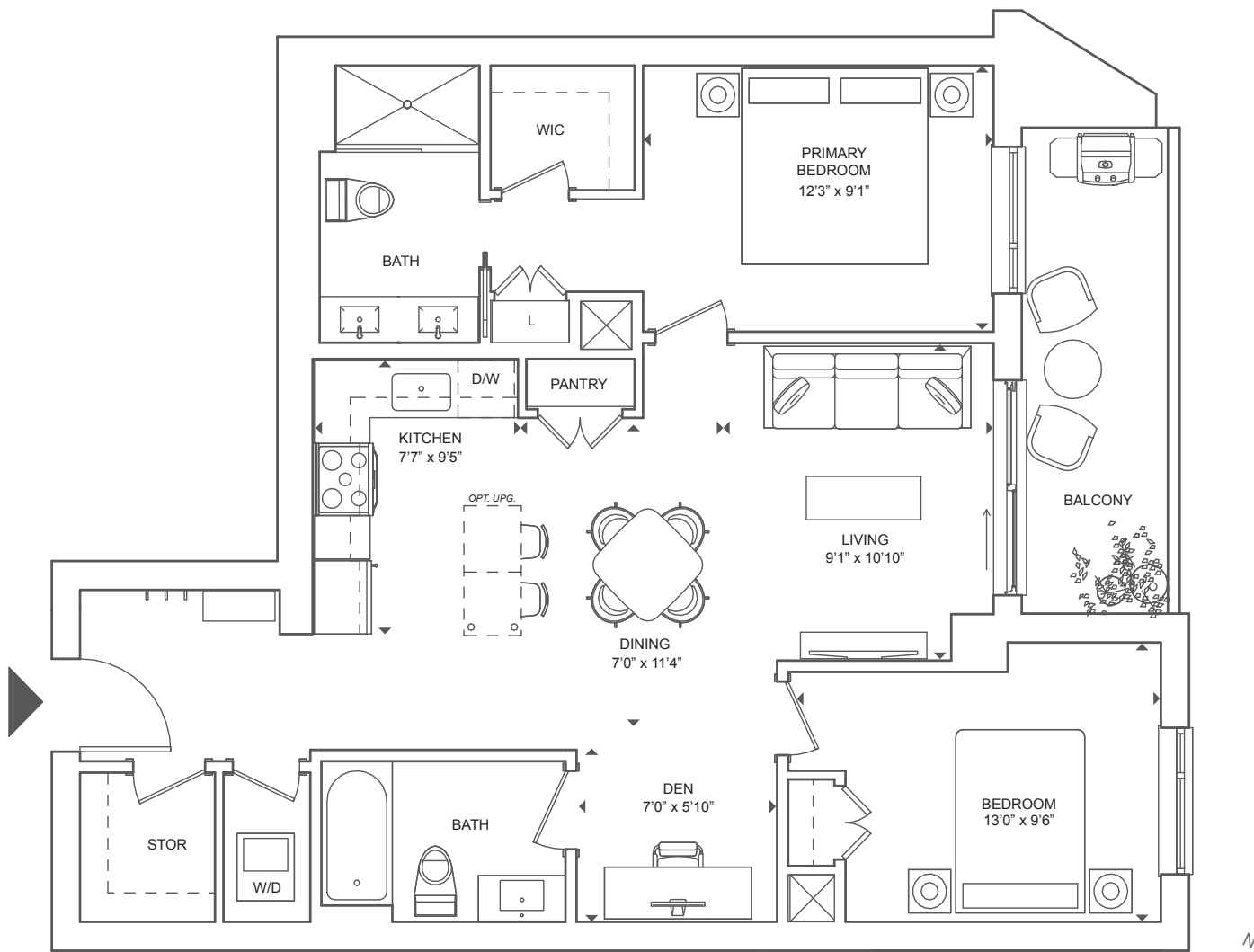


The Balance

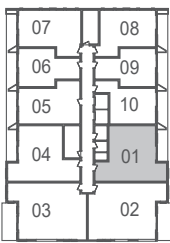
2 Bed + Den, 2 Bath

Interior 954 SF
Exterior 93 SF
Total 1047 SF



Porta

BELLEVILLE WATERFRONT LIVING



Floors 4-11

Floor plans are intended to give a general indication of the proposed layout only. Architectural, structural, and mechanical layouts are subject to change without notice. All materials, specifications, details and dimensions, if any, are approximate and subject to change by the Vendor without notice to the Purchaser in order to comply with building site conditions and municipal, structural, Vendor, and/or architectural requirements. Actual usable floor space may vary from the stated floor area in accordance with Bulletin 22 published by the Tarion Warranty Corporation. Bulkheads are not shown on this plan and may be located in areas of the Unit as required. All exterior spaces shown, if any, are exclusive use common elements shown for display purposes only and the location and size are subject to change by the Vendor without notice to the Purchaser. Window location, size and type may vary without notice to the Purchaser.

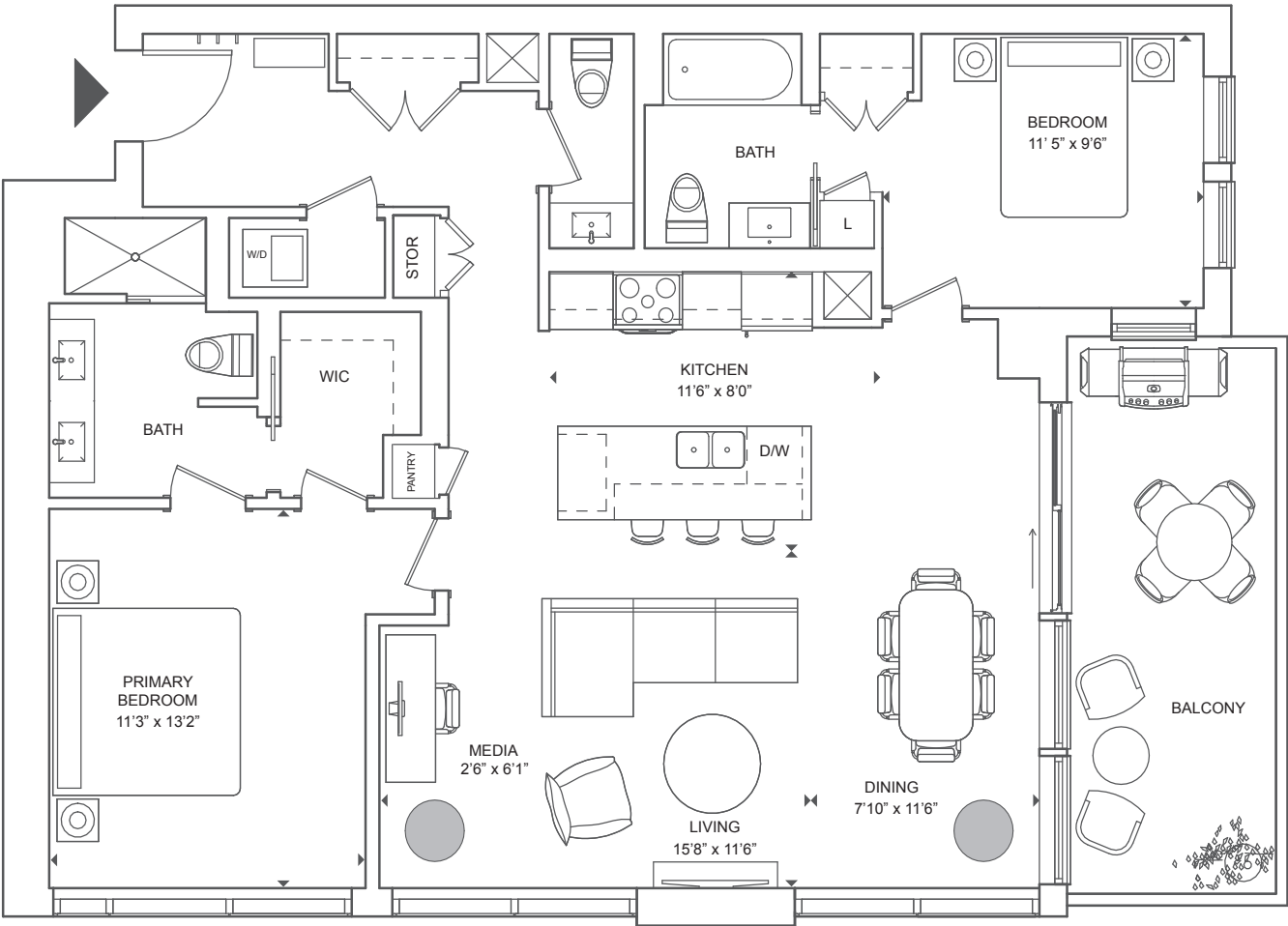
Certain floors may have less floor space due to thicker structural members, mechanical rooms, etc. This plan supersedes any marketing plan or material. Furniture and fixture representations are for illustration purposes only and do not reflect electrical plans for the suite. All suites are sold unfurnished. All measurements are calculated in accordance with industry accepted standards. All images and dimensions are not intended to form a part of any Agreement and are included for display purposes only. E.O.E. July 2022.

MDM
MDM DEVELOPMENTS

The Merlot

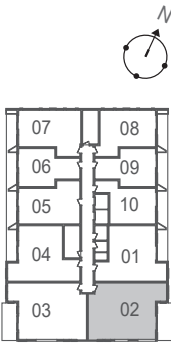
2 Bed + Media, 2.5 Bath

Interior 1203 SF
Exterior 155 SF
Total 1358 SF



Porta

BELLEVILLE WATERFRONT LIVING



Floors 4-11

Floor plans are intended to give a general indication of the proposed layout only. Architectural, structural, and mechanical layouts are subject to change without notice. All materials, specifications, details and dimensions, if any, are approximate and subject to change by the Vendor without notice to the Purchaser in order to comply with building site conditions and municipal, structural, Vendor, and/or architectural requirements. Actual usable floor space may vary from the stated floor area in accordance with Bulletin 22 published by the Tarion Warranty Corporation. Bulkheads are not shown on this plan and may be located in areas of the Unit as required. All exterior spaces shown, if any, are exclusive use common elements shown for display purposes only and the location and size are subject to change by the Vendor without notice to the Purchaser. Window location, size and type may vary without notice to the Purchaser.

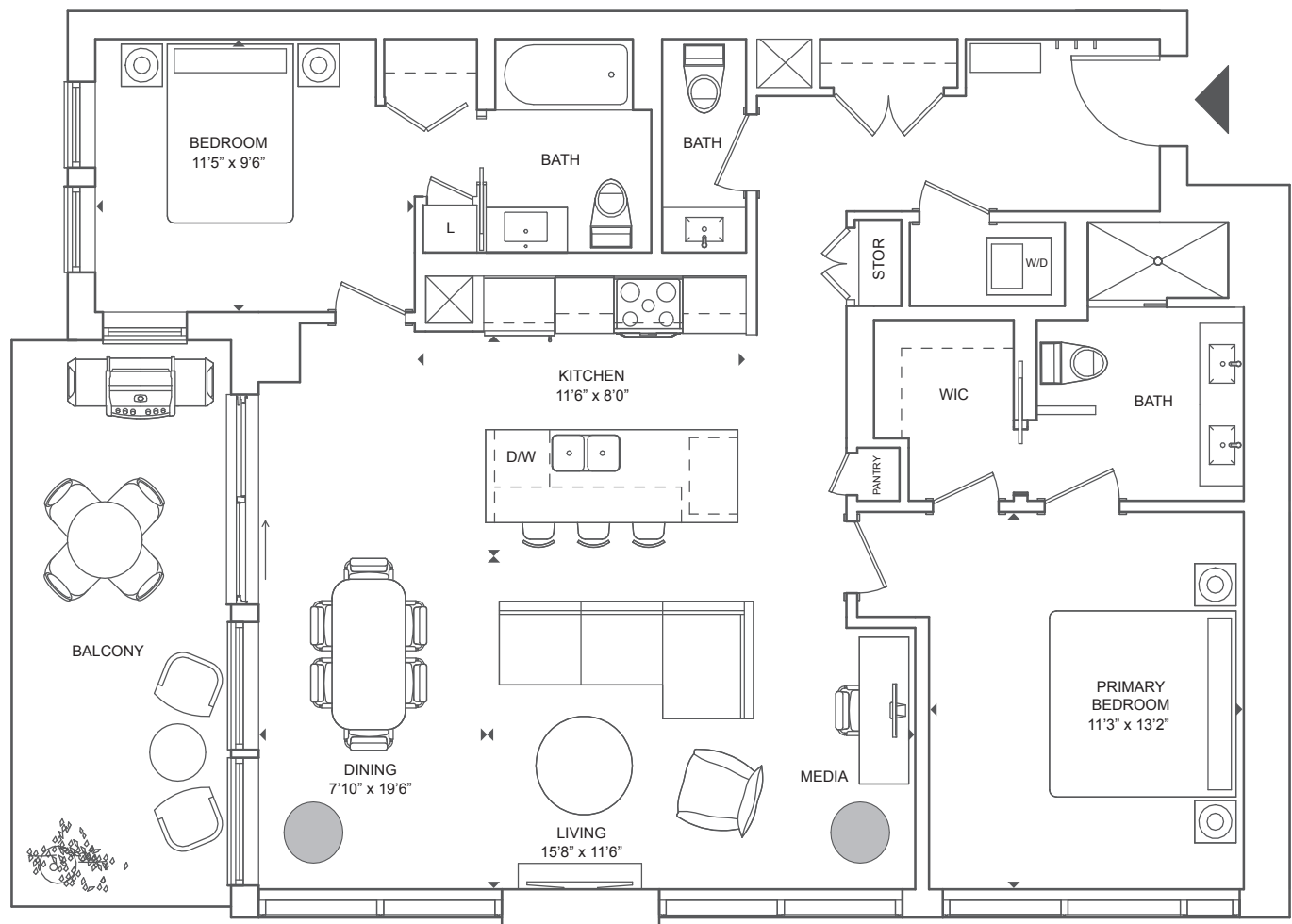
Certain floors may have less floor space due to thicker structural members, mechanical rooms, etc. This plan supersedes any marketing plan or material. Furniture and fixture representations are for illustration purposes only and do not reflect electrical plans for the suite. All suites are sold unfurnished. All measurements are calculated in accordance with industry accepted standards. All images and dimensions are not intended to form a part of any Agreement and are included for display purposes only. E.O.E. July 2022.



The Cabernet

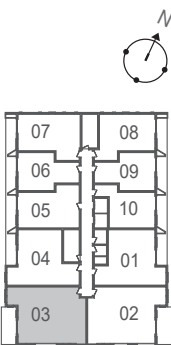
2 Bed + Media, 2.5 Bath

Interior 1207 SF
Exterior 155 SF
Total 1362 SF



Porta

BELLEVILLE WATERFRONT LIVING



Floors 4-11

Floor plans are intended to give a general indication of the proposed layout only. Architectural, structural, and mechanical layouts are subject to change without notice. All materials, specifications, details and dimensions, if any, are approximate and subject to change by the Vendor without notice to the Purchaser in order to comply with building site conditions and municipal, structural, Vendor, and/or architectural requirements. Actual usable floor space may vary from the stated floor area in accordance with Bulletin 22 published by the Tarion Warranty Corporation. Bulkheads are not shown on this plan and may be located in areas of the Unit as required. All exterior spaces shown, if any, are exclusive use common elements shown for display purposes only and the location and size are subject to change by the Vendor without notice to the Purchaser. Window location, size and type may vary without notice to the Purchaser.

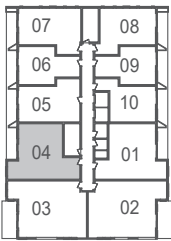
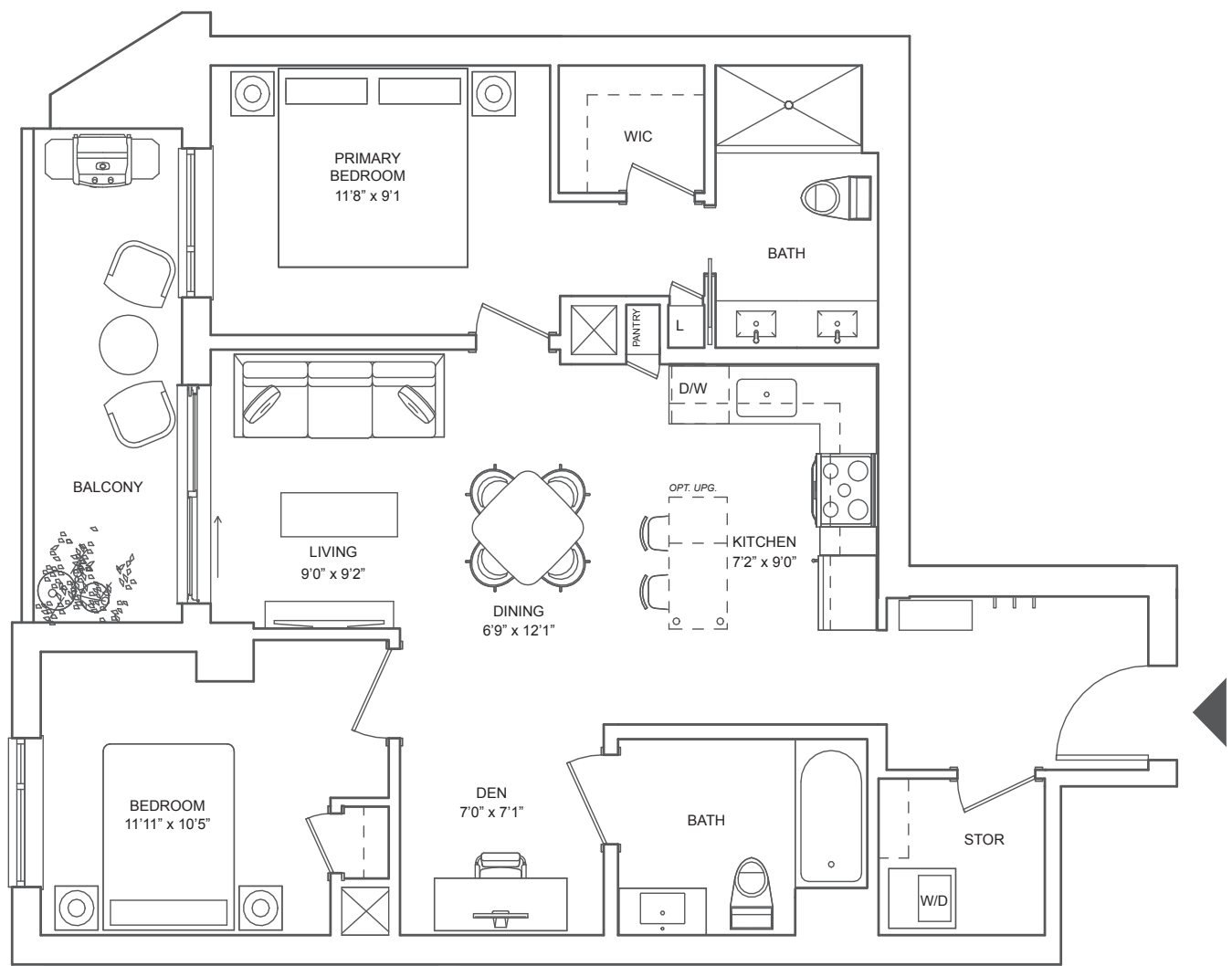
Certain floors may have less floor space due to thicker structural members, mechanical rooms, etc. This plan supersedes any marketing plan or material. Furniture and fixture representations are for illustration purposes only and do not reflect electrical plans for the suite. All suites are sold unfurnished. All measurements are calculated in accordance with industry accepted standards. All images and dimensions are not intended to form a part of any Agreement and are included for display purposes only. E.O.E. July 2022.

MDM
MDM DEVELOPMENTS

The Barrique

2 Bed + Den, 2 Bath

Interior 919 SF
Exterior 93 SF
Total 1012 SF



Porta

BELLEVILLE WATERFRONT LIVING

Floors 4-11
Accessible Suites

Floor plans are intended to give a general indication of the proposed layout only. Architectural, structural, and mechanical layouts are subject to change without notice. All materials, specifications, details and dimensions, if any, are approximate and subject to change by the Vendor without notice to the Purchaser in order to comply with building site conditions and municipal, structural, Vendor, and/or architectural requirements. Actual usable floor space may vary from the stated floor area in accordance with Bulletin 22 published by the Tarion Warranty Corporation. Bulkheads are not shown on this plan and may be located in areas of the Unit as required. All exterior spaces shown, if any, are exclusive use common elements shown for display purposes only and the location and size are subject to change by the Vendor without notice to the Purchaser. Window location, size and type may vary without notice to the Purchaser.

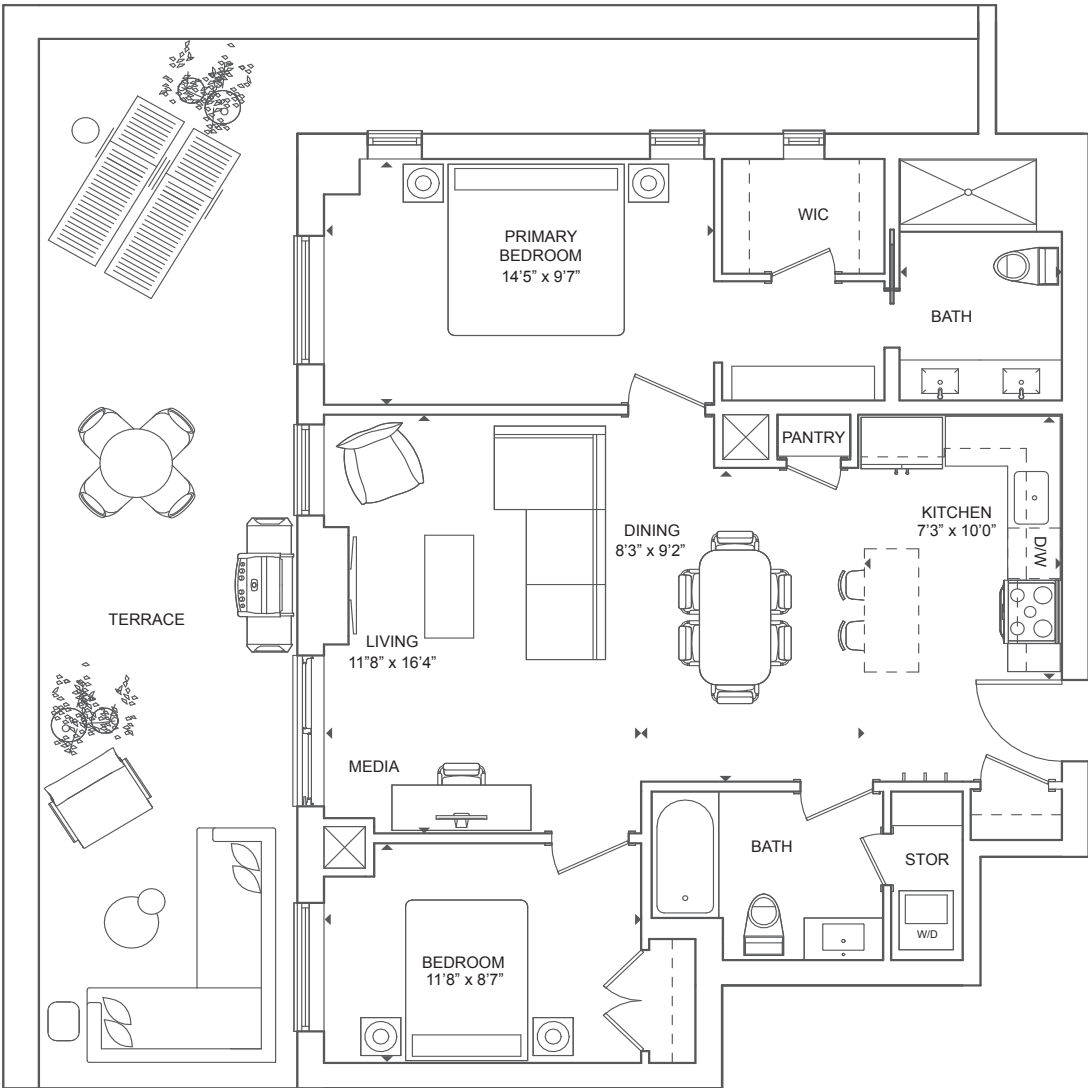
Certain floors may have less floor space due to thicker structural members, mechanical rooms, etc. This plan supersedes any marketing plan or material. Furniture and fixture representations are for illustration purposes only and do not reflect electrical plans for the suite. All suites are sold unfurnished. All measurements are calculated in accordance with industry accepted standards. All images and dimensions are not intended to form a part of any Agreement and are included for display purposes only. E.O.E. July 2022.

MDM
MDM DEVELOPMENTS

The Hollow

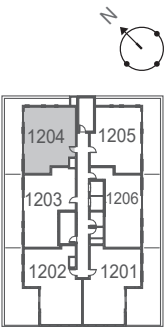
2 Bed + Media, 2 Bath

Interior 1009 SF
Exterior 580 SF
Total 1589 SF



Porta

BELLEVILLE WATERFRONT LIVING



Floor 12

Floor plans are intended to give a general indication of the proposed layout only. Architectural, structural, and mechanical layouts are subject to change without notice. All materials, specifications, details and dimensions, if any, are approximate and subject to change by the Vendor without notice to the Purchaser in order to comply with building site conditions and municipal, structural, Vendor, and/or architectural requirements. Actual usable floor space may vary from the stated floor area in accordance with Bulletin 22 published by the Tarion Warranty Corporation. Bulkheads are not shown on this plan and may be located in areas of the Unit as required. All exterior spaces shown, if any, are exclusive use common elements shown for display purposes only and the location and size are subject to change by the Vendor without notice to the Purchaser. Window location, size and type may vary without notice to the Purchaser.

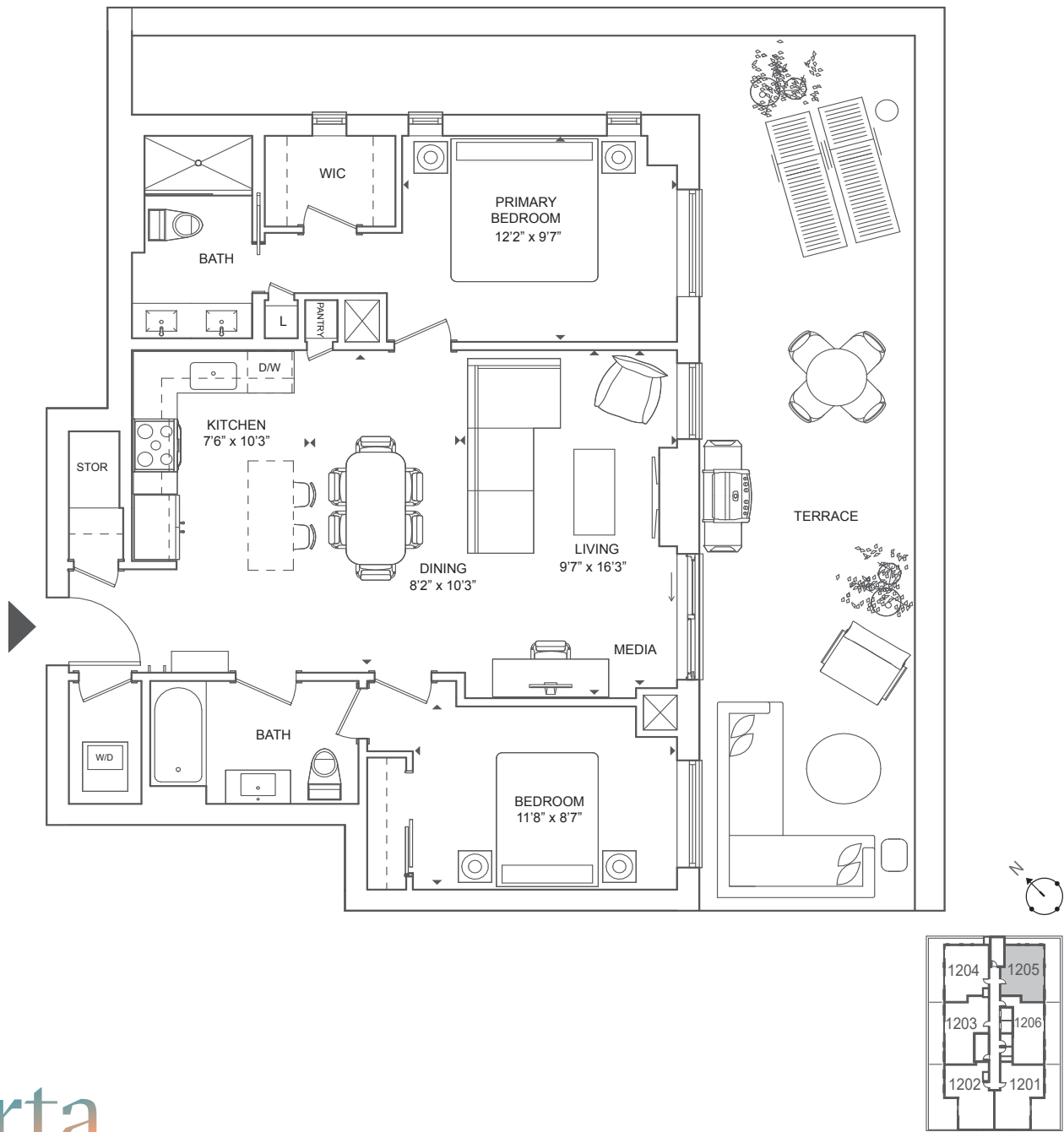
Certain floors may have less floor space due to thicker structural members, mechanical rooms, etc. This plan supersedes any marketing plan or material. Furniture and fixture representations are for illustration purposes only and do not reflect electrical plans for the suite. All suites are sold unfurnished. All measurements are calculated in accordance with industry accepted standards. All images and dimensions are not intended to form a part of any Agreement and are included for display purposes only. E.O.E. July 2022.

MDM
MDM DEVELOPMENTS

The Haut

2 Bed + Media, 2 Bath

Interior 967 SF
Exterior 582 SF
Total 1549 SF



Porta

BELLEVILLE WATERFRONT LIVING

Floor 12

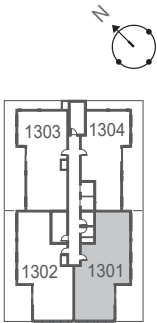
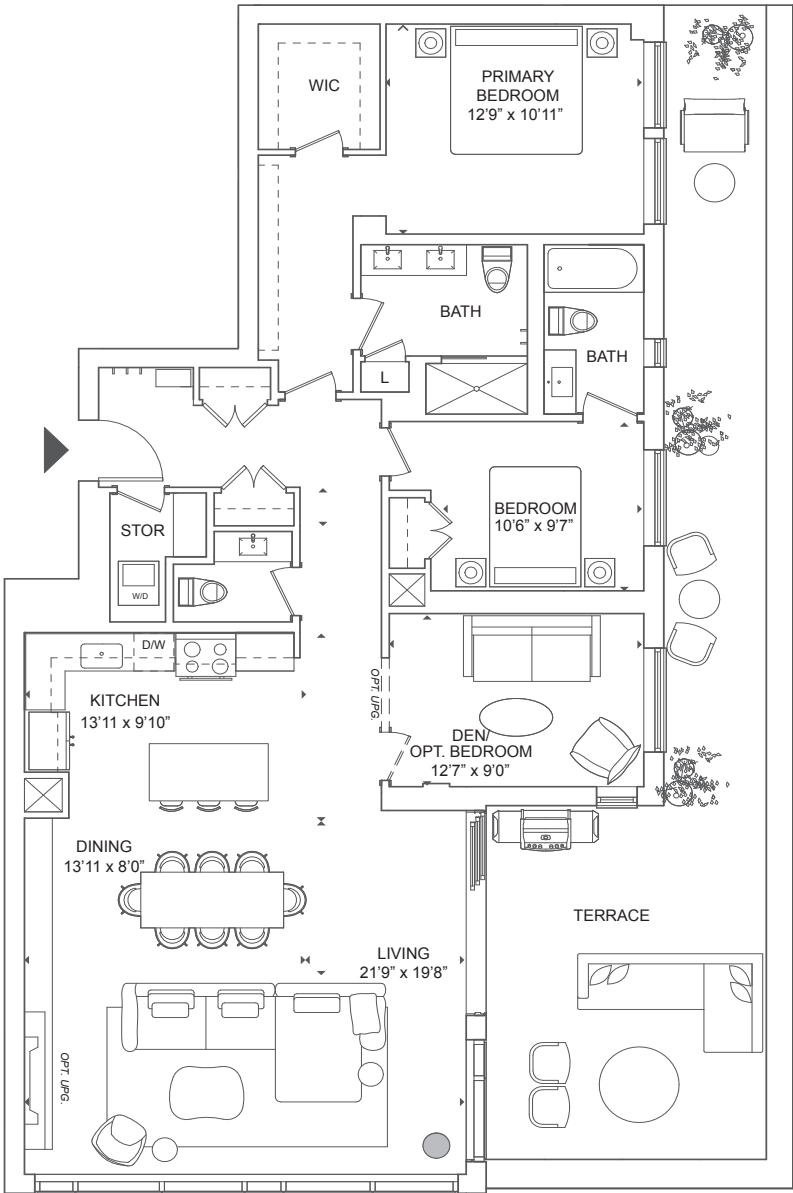
Floor plans are intended to give a general indication of the proposed layout only. Architectural, structural, and mechanical layouts are subject to change without notice. All materials, specifications, details and dimensions, if any, are approximate and subject to change by the Vendor without notice to the Purchaser in order to comply with building site conditions and municipal, structural, Vendor, and/or architectural requirements. Actual usable floor space may vary from the stated floor area in accordance with Bulletin 22 published by the Taron Warranty Corporation. Bulkheads are not shown on this plan and may be located in areas of the Unit as required. All exterior spaces shown, if any, are exclusive use common elements shown for display purposes only and the location and size are subject to change by the Vendor without notice to the Purchaser. Window location, size and type may vary without notice to the Purchaser.

Certain floors may have less floor space due to thicker structural members, mechanical rooms, etc. This plan supersedes any marketing plan or material. Furniture and fixture representations are for illustration purposes only and do not reflect electrical plans for the suite. All suites are sold unfurnished. All measurements are calculated in accordance with industry accepted standards. All images and dimensions are not intended to form a part of any Agreement and are included for display purposes only. E.O.E. July 2022.

The Kabinett

2 Bed + Den, 2.5 Bath

Interior 1553 SF
Exterior 564 SF
Total 2117 SF



Floor 13

Porta

BELLEVILLE WATERFRONT LIVING

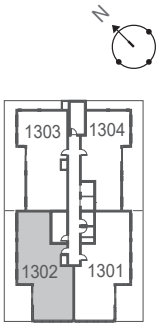
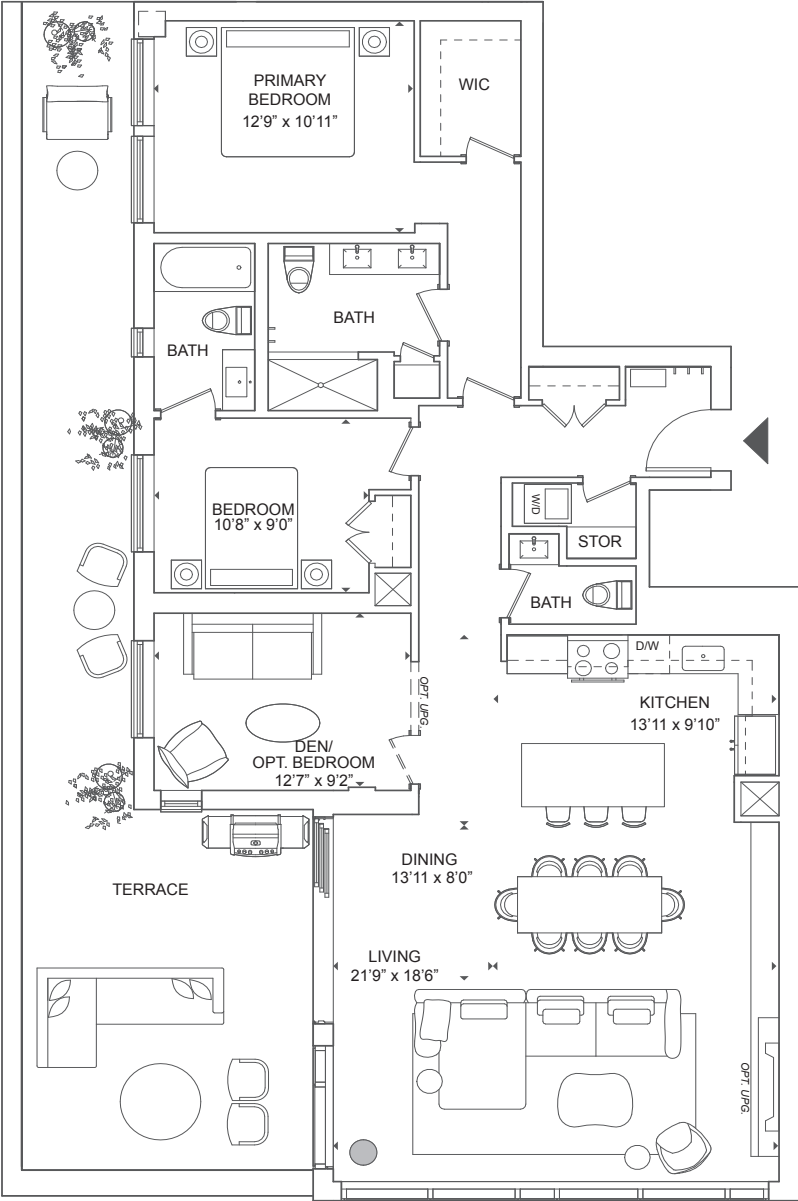
Floor plans are intended to give a general indication of the proposed layout only. Architectural, structural, and mechanical layouts are subject to change without notice. All materials, specifications, details and dimensions, if any, are approximate and subject to change by the Vendor without notice to the Purchaser in order to comply with building site conditions and municipal, structural, Vendor, and/or architectural requirements. Actual usable floor space may vary from the stated floor area in accordance with Bulletin 22 published by the Tarion Warranty Corporation. Bulkheads are not shown on this plan and may be located in areas of the Unit as required. All exterior spaces shown, if any, are exclusive use common elements shown for display purposes only and the location and size are subject to change by the Vendor without notice to the Purchaser. Window location, size and type may vary without notice to the Purchaser.

Certain floors may have less floor space due to thicker structural members, mechanical rooms, etc. This plan supersedes any marketing plan or material. Furniture and fixture representations are for illustration purposes only and do not reflect electrical plans for the suite. All suites are sold unfurnished. All measurements are calculated in accordance with industry accepted standards. All images and dimensions are not intended to form a part of any Agreement and are included for display purposes only. E.O.E. July 2022.

The Reserve

2 Bed + Den, 2.5 Bath

Interior 1516 SF
Exterior 568 SF
Total 2084 SF



Floor 13

Porta

BELLEVILLE WATERFRONT LIVING

Floor plans are intended to give a general indication of the proposed layout only. Architectural, structural, and mechanical layouts are subject to change without notice. All materials, specifications, details and dimensions, if any, are approximate and subject to change by the Vendor without notice to the Purchaser in order to comply with building site conditions and municipal, structural, Vendor, and/or architectural requirements. Actual usable floor space may vary from the stated floor area in accordance with Bulletin 22 published by the Tarion Warranty Corporation. Bulkheads are not shown on this plan and may be located in areas of the Unit as required. All exterior spaces shown, if any, are exclusive use common elements shown for display purposes only and the location and size are subject to change by the Vendor without notice to the Purchaser. Window location, size and type may vary without notice to the Purchaser.

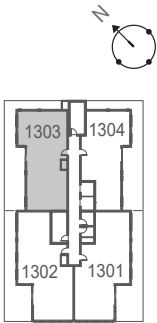
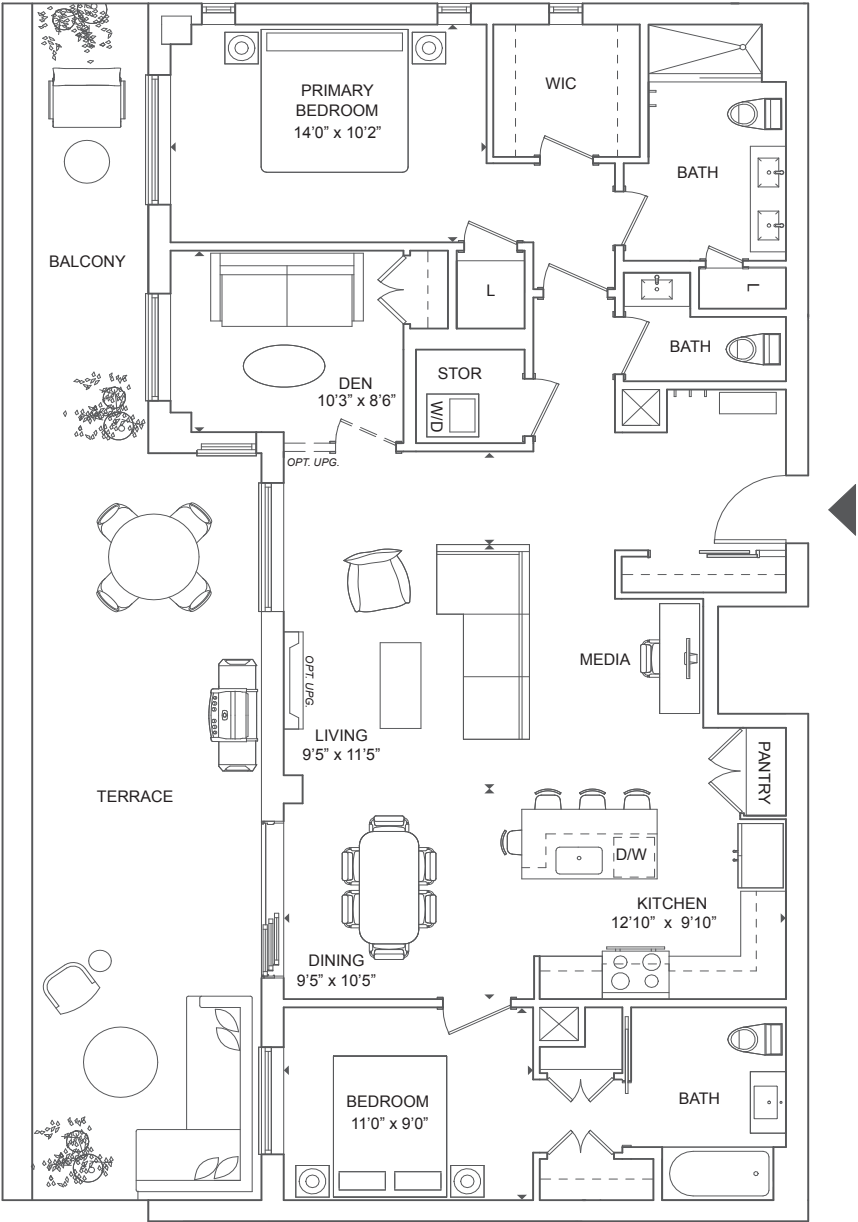
Certain floors may have less floor space due to thicker structural members, mechanical rooms, etc. This plan supersedes any marketing plan or material. Furniture and fixture representations are for illustration purposes only and do not reflect electrical plans for the suite. All suites are sold unfurnished. All measurements are calculated in accordance with industry accepted standards. All images and dimensions are not intended to form a part of any Agreement and are included for display purposes only. E.O.E. July 2022.



The Vintage

2 Bed + Den, 2.5 Bath

Interior 1465 SF
Exterior 538 SF
Total 2003 SF



Porta

BELLEVILLE WATERFRONT LIVING

Floors 13
Accessible Suites

Floor plans are intended to give a general indication of the proposed layout only. Architectural, structural, and mechanical layouts are subject to change without notice. All materials, specifications, details and dimensions, if any, are approximate and subject to change by the Vendor without notice to the Purchaser in order to comply with building site conditions and municipal, structural, Vendor, and/or architectural requirements. Actual usable floor space may vary from the stated floor area in accordance with Bulletin 22 published by the Tarion Warranty Corporation. Bulkheads are not shown on this plan and may be located in areas of the Unit as required. All exterior spaces shown, if any, are exclusive use common elements shown for display purposes only and the location and size are subject to change by the Vendor without notice to the Purchaser. Window location, size and type may vary without notice to the Purchaser.

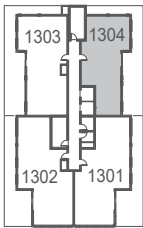
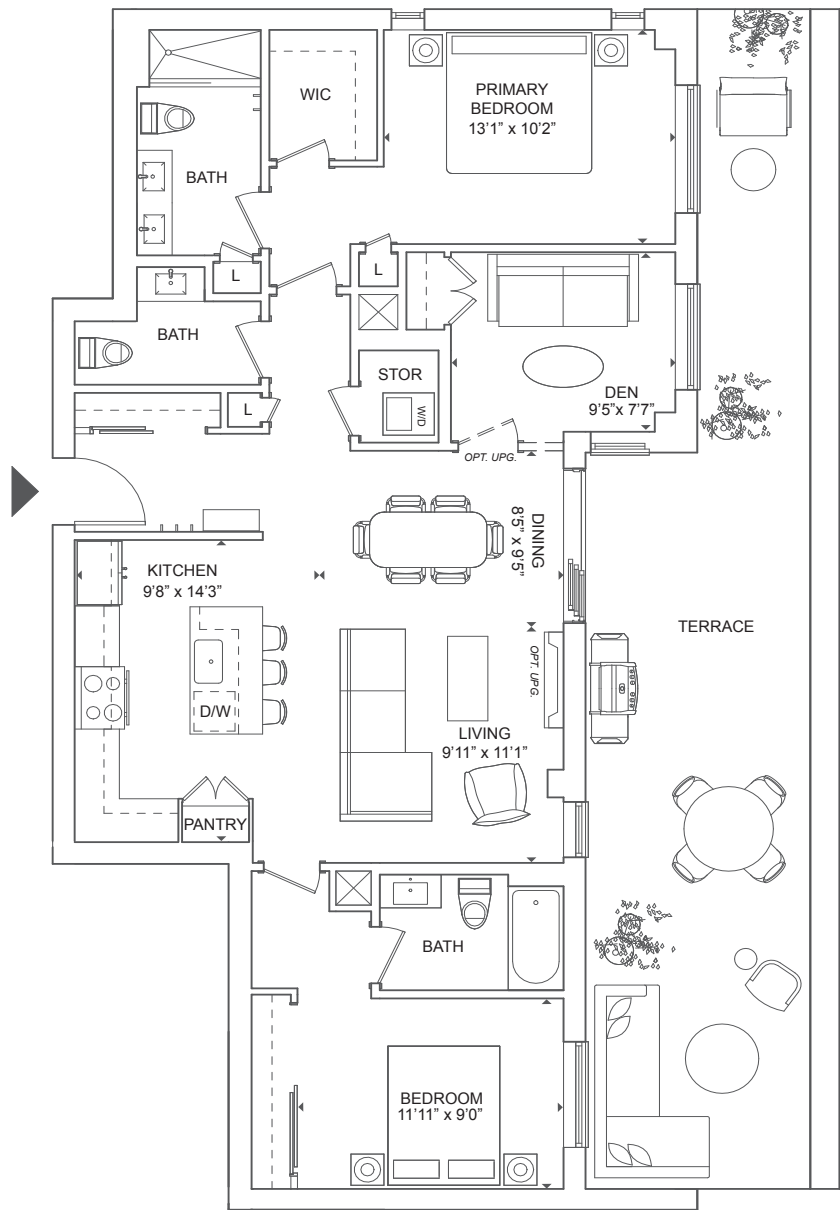
Certain floors may have less floor space due to thicker structural members, mechanical rooms, etc. This plan supersedes any marketing plan or material. Furniture and fixture representations are for illustration purposes only and do not reflect electrical plans for the suite. All suites are sold unfurnished. All measurements are calculated in accordance with industry accepted standards. All images and dimensions are not intended to form a part of any Agreement and are included for display purposes only. E.O.E. July 2022.

MDM
MDM DEVELOPMENTS

The Rosé

2 Bed + Den, 2.5 Bath

Interior 1287 SF
Exterior 534 SF
Total 1821 SF



Floor 13

Porta

BELLEVILLE WATERFRONT LIVING

Floor plans are intended to give a general indication of the proposed layout only. Architectural, structural, and mechanical layouts are subject to change without notice. All materials, specifications, details and dimensions, if any, are approximate and subject to change by the Vendor without notice to the Purchaser in order to comply with building site conditions and municipal, structural, Vendor, and/or architectural requirements. Actual usable floor space may vary from the stated floor area in accordance with Bulletin 22 published by the Tarion Warranty Corporation. Bulkheads are not shown on this plan and may be located in areas of the Unit as required. All exterior spaces shown, if any, are exclusive use common elements shown for display purposes only and the location and size are subject to change by the Vendor without notice to the Purchaser. Window location, size and type may vary without notice to the Purchaser.

Certain floors may have less floor space due to thicker structural members, mechanical rooms, etc. This plan supersedes any marketing plan or material. Furniture and fixture representations are for illustration purposes only and do not reflect electrical plans for the suite. All suites are sold unfurnished. All measurements are calculated in accordance with industry accepted standards. All images and dimensions are not intended to form a part of any Agreement and are included for display purposes only. E.O.E. July 2022.

