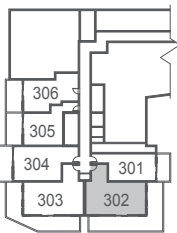
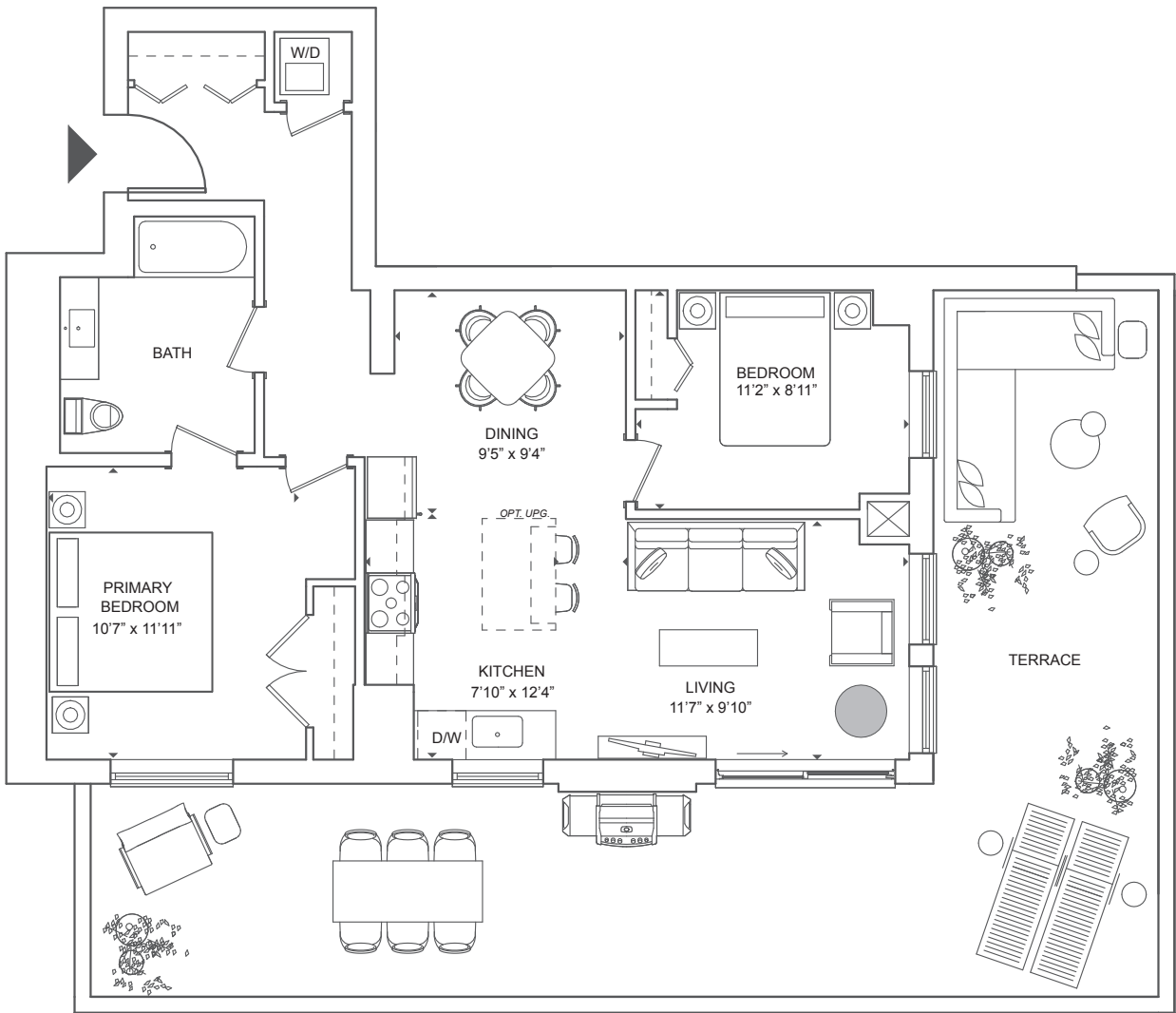


The Vidal

2 Bed, 1 Bath

Interior 881 SF
Exterior 616 SF
Total 1497 SF



Floor 3

Porta

BELLEVILLE WATERFRONT LIVING

Floor plans are intended to give a general indication of the proposed layout only. Architectural, structural, and mechanical layouts are subject to change without notice. All materials, specifications, details and dimensions, if any, are approximate and subject to change by the Vendor without notice to the Purchaser in order to comply with building site conditions and municipal, structural, Vendor, and/or architectural requirements. Actual usable floor space may vary from the stated floor area in accordance with Bulletin 22 published by the Tarion Warranty Corporation. Bulkheads are not shown on this plan and may be located in areas of the Unit as required. All exterior spaces shown, if any, are exclusive use common elements shown for display purposes only and the location and size are subject to change by the Vendor without notice to the Purchaser. Window location, size and type may vary without notice to the Purchaser.

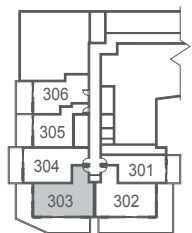
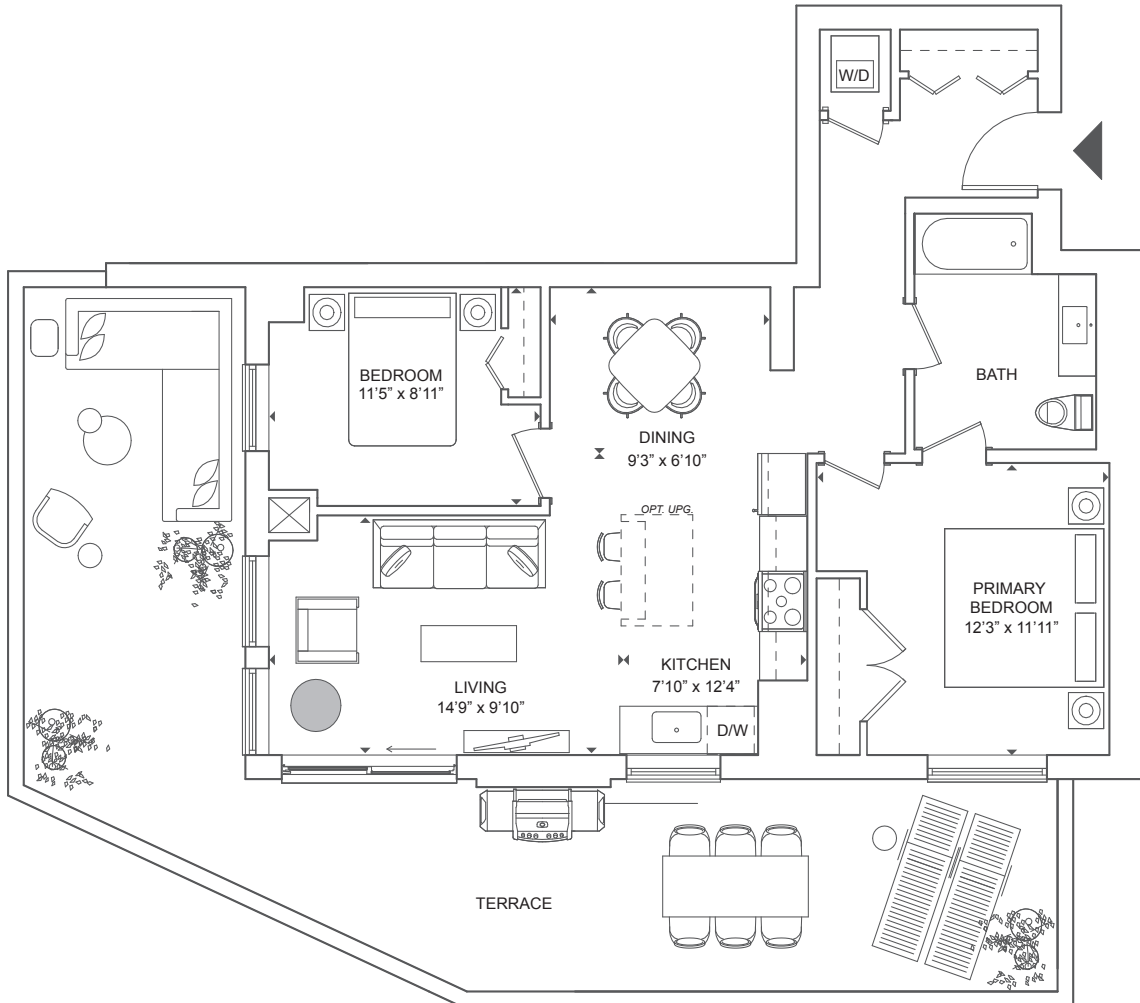
Certain floors may have less floor space due to thicker structural members, mechanical rooms, etc. This plan supersedes any marketing plan or material. Furniture and fixture representations are for illustration purposes only and do not reflect electrical plans for the suite. All suites are sold unfurnished. All measurements are calculated in accordance with industry accepted standards. All images and dimensions are not intended to form a part of any Agreement and are included for display purposes only. E.O.E. July 2022.



The Baco

2 Bed, 1 Bath

Interior 882 SF
Exterior 533 SF
Total 1415 SF



Floor 3

Porta

BELLEVILLE WATERFRONT LIVING

Floor plans are intended to give a general indication of the proposed layout only. Architectural, structural, and mechanical layouts are subject to change without notice. All materials, specifications, details and dimensions, if any, are approximate and subject to change by the Vendor without notice to the Purchaser in order to comply with building site conditions and municipal, structural, Vendor, and/or architectural requirements. Actual usable floor space may vary from the stated floor area in accordance with Bulletin 22 published by the Tarion Warranty Corporation. Bulkheads are not shown on this plan and may be located in areas of the Unit as required. All exterior spaces shown, if any, are exclusive use common elements shown for display purposes only and the location and size are subject to change by the Vendor without notice to the Purchaser. Window location, size and type may vary without notice to the Purchaser.

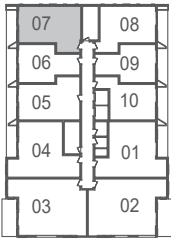
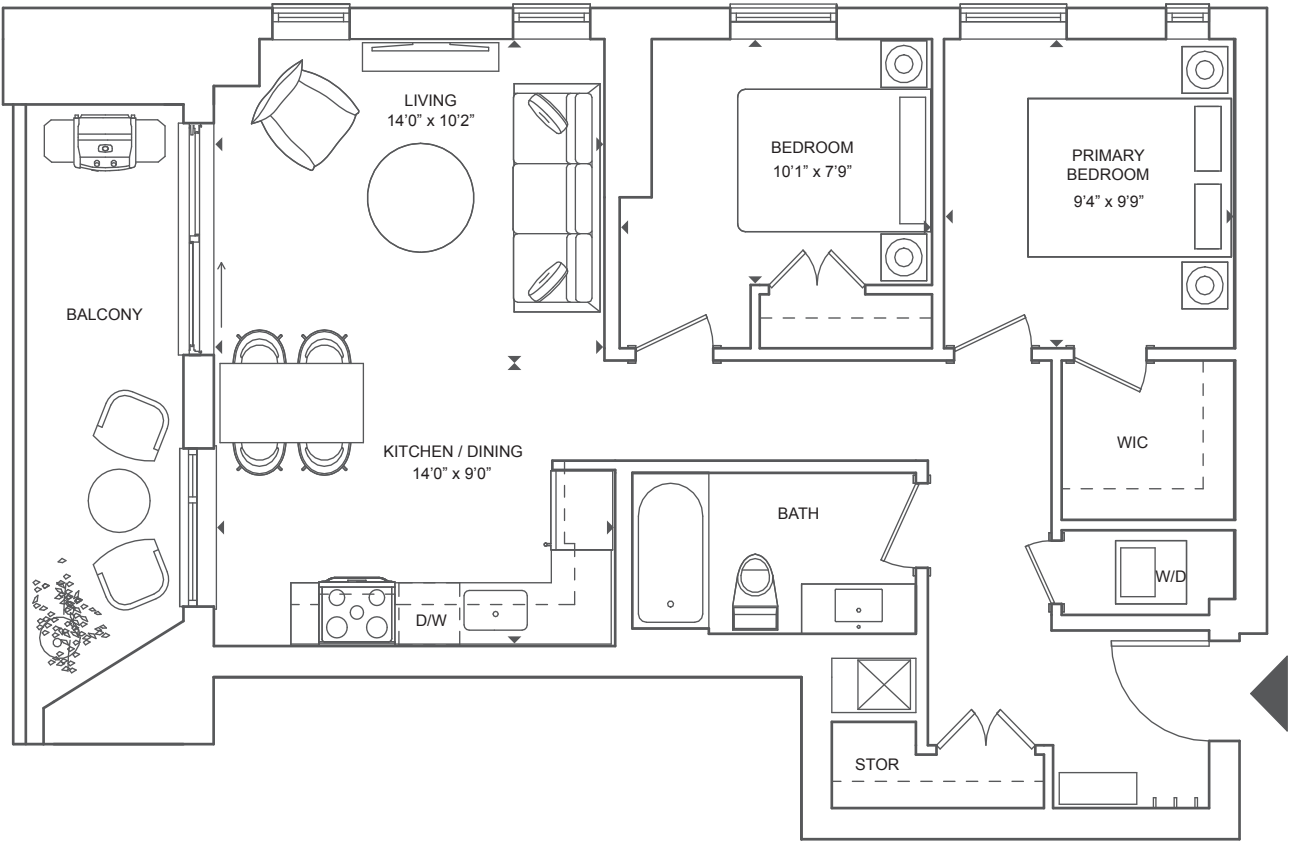
Certain floors may have less floor space due to thicker structural members, mechanical rooms, etc. This plan supersedes any marketing plan or material. Furniture and fixture representations are for illustration purposes only and do not reflect electrical plans for the suite. All suites are sold unfurnished. All measurements are calculated in accordance with industry accepted standards. All images and dimensions are not intended to form a part of any Agreement and are included for display purposes only. E.O.E. July 2022.

MDM
MDM DEVELOPMENTS

The Cava

2 Bed, 1 Bath

Interior 825 SF
Exterior 100 SF
Total 925 SF



Floors 4-11

Porta

BELLEVILLE WATERFRONT LIVING

Floor plans are intended to give a general indication of the proposed layout only. Architectural, structural, and mechanical layouts are subject to change without notice. All materials, specifications, details and dimensions, if any, are approximate and subject to change by the Vendor without notice to the Purchaser in order to comply with building site conditions and municipal, structural, Vendor, and/or architectural requirements. Actual usable floor space may vary from the stated floor area in accordance with Bulletin 22 published by the Tarion Warranty Corporation. Bulkheads are not shown on this plan and may be located in areas of the Unit as required. All exterior spaces shown, if any, are exclusive use common elements shown for display purposes only and the location and size are subject to change by the Vendor without notice to the Purchaser. Window location, size and type may vary without notice to the Purchaser.

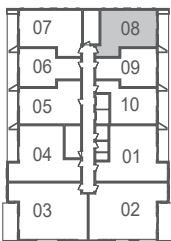
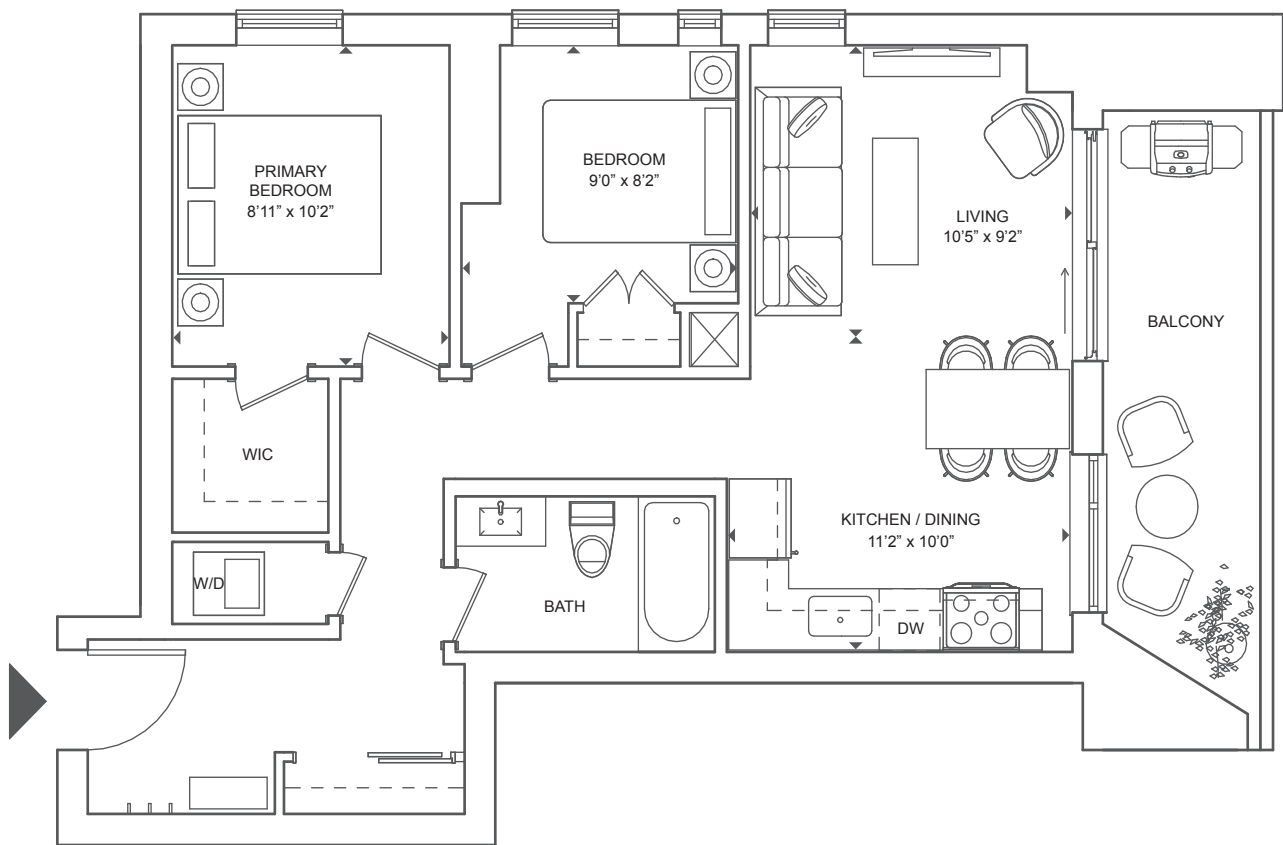
Certain floors may have less floor space due to thicker structural members, mechanical rooms, etc. This plan supersedes any marketing plan or material. Furniture and fixture representations are for illustration purposes only and do not reflect electrical plans for the suite. All suites are sold unfurnished. All measurements are calculated in accordance with industry accepted standards. All images and dimensions are not intended to form a part of any Agreement and are included for display purposes only. E.O.E. July 2022.



The Bodega

2 Bed, 1 Bath

Interior 746 SF
Exterior 99 SF
Total 845 SF



Porta

BELLEVILLE WATERFRONT LIVING

Floors 4-11

Floor plans are intended to give a general indication of the proposed layout only. Architectural, structural, and mechanical layouts are subject to change without notice. All materials, specifications, details and dimensions, if any, are approximate and subject to change by the Vendor without notice to the Purchaser in order to comply with building site conditions and municipal, structural, Vendor, and/or architectural requirements. Actual usable floor space may vary from the stated floor area in accordance with Bulletin 22 published by the Tarion Warranty Corporation. Bulkheads are not shown on this plan and may be located in areas of the Unit as required. All exterior spaces shown, if any, are exclusive use common elements shown for display purposes only and the location and size are subject to change by the Vendor without notice to the Purchaser. Window location, size and type may vary without notice to the Purchaser.

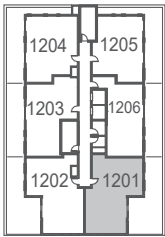
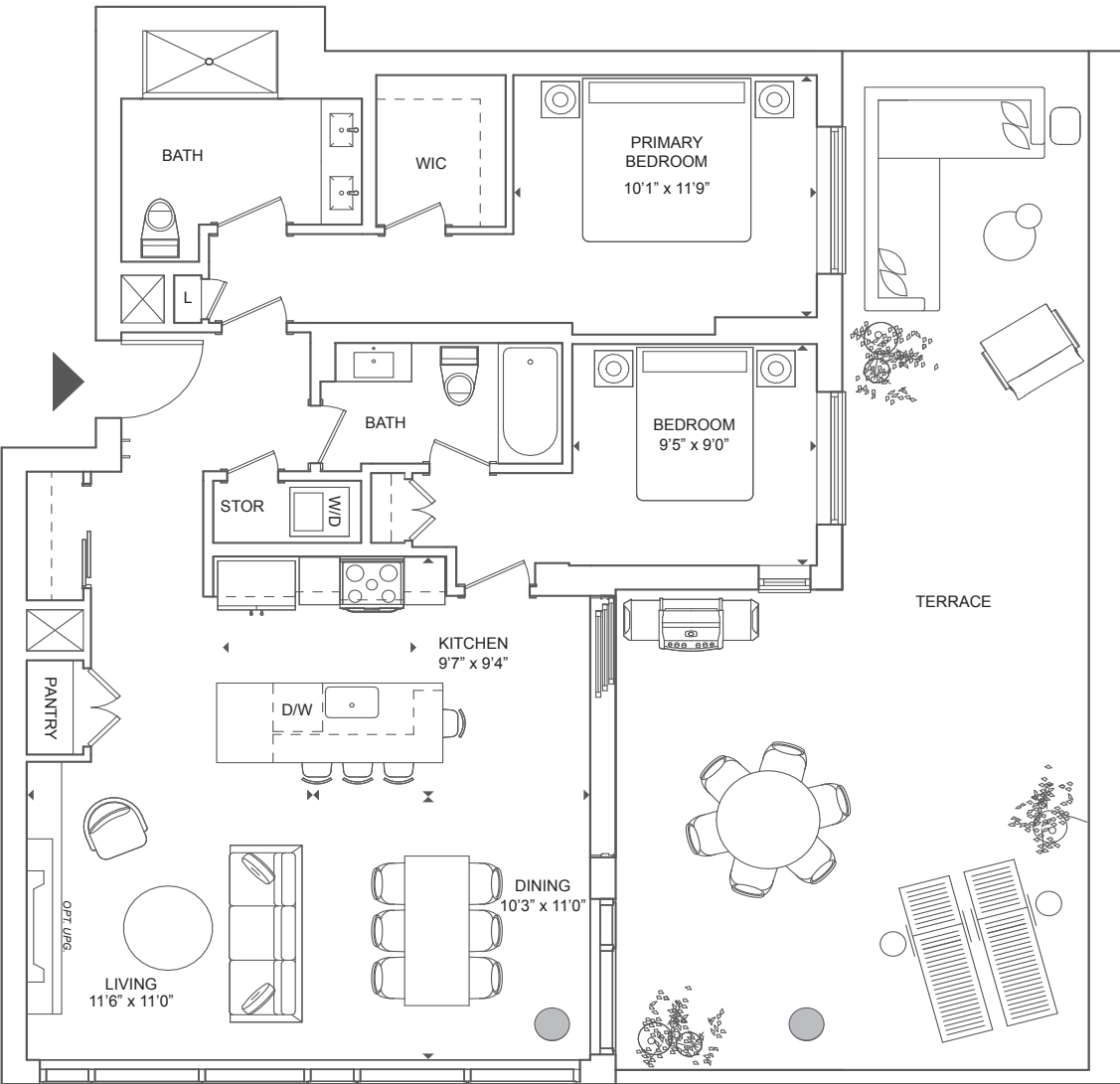
Certain floors may have less floor space due to thicker structural members, mechanical rooms, etc. This plan supersedes any marketing plan or material. Furniture and fixture representations are for illustration purposes only and do not reflect electrical plans for the suite. All suites are sold unfurnished. All measurements are calculated in accordance with industry accepted standards. All images and dimensions are not intended to form a part of any Agreement and are included for display purposes only. E.O.E. July 2022.

MDM
MDM DEVELOPMENTS

The Chateau

2 Bed, 2 Bath

Interior 1127 SF
Exterior 629 SF
Total 1756 SF



Porta

BELLEVILLE WATERFRONT LIVING

Floor 12

Floor plans are intended to give a general indication of the proposed layout only. Architectural, structural, and mechanical layouts are subject to change without notice. All materials, specifications, details and dimensions, if any, are approximate and subject to change by the Vendor without notice to the Purchaser in order to comply with building site conditions and municipal, structural, Vendor, and/or architectural requirements. Actual usable floor space may vary from the stated floor area in accordance with Bulletin 22 published by the Tarion Warranty Corporation. Bulkheads are not shown on this plan and may be located in areas of the Unit as required. All exterior spaces shown, if any, are exclusive use common elements shown for display purposes only and the location and size are subject to change by the Vendor without notice to the Purchaser. Window location, size and type may vary without notice to the Purchaser.

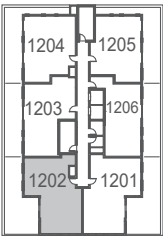
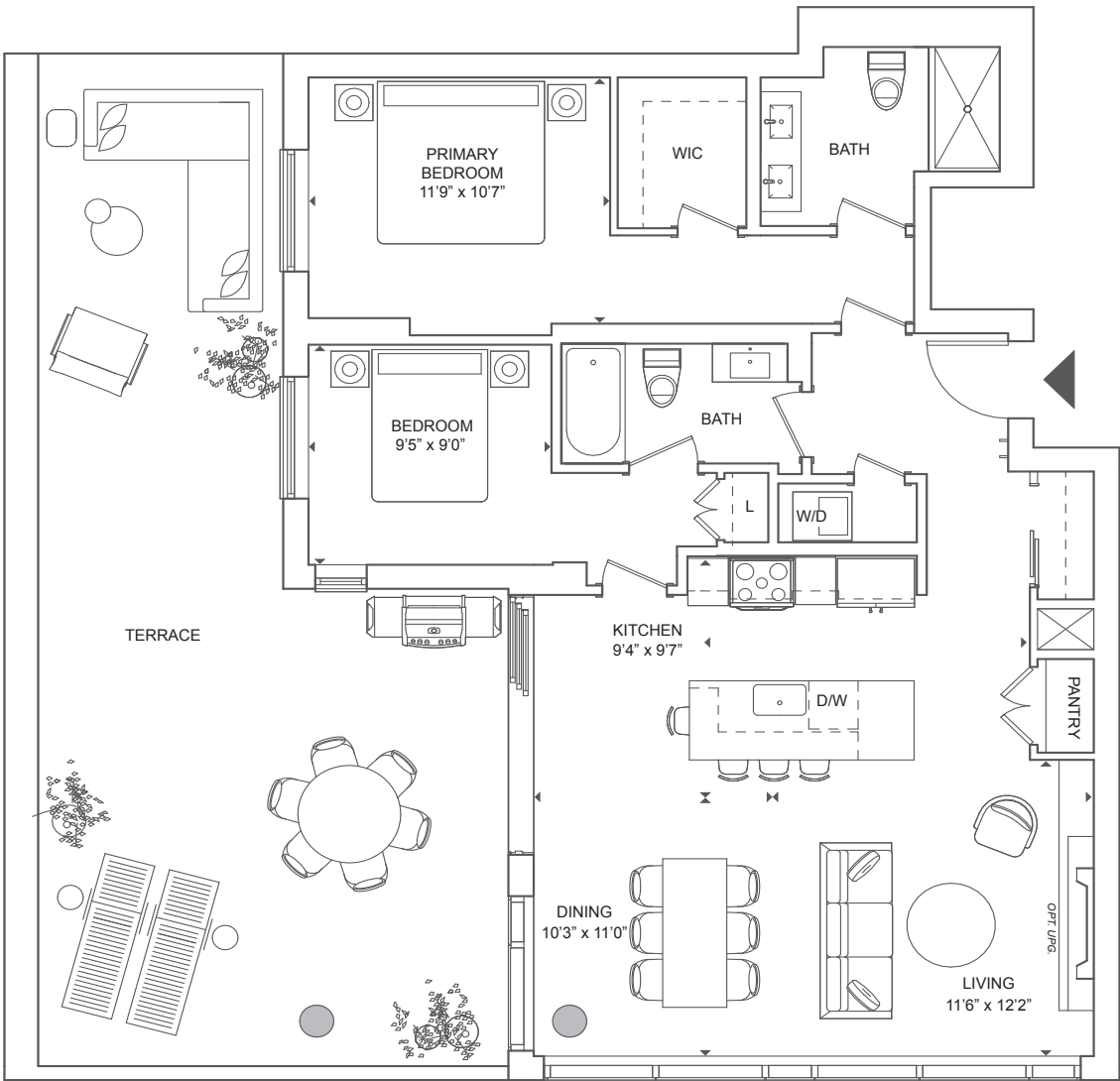
Certain floors may have less floor space due to thicker structural members, mechanical rooms, etc. This plan supersedes any marketing plan or material. Furniture and fixture representations are for illustration purposes only and do not reflect electrical plans for the suite. All suites are sold unfurnished. All measurements are calculated in accordance with industry accepted standards. All images and dimensions are not intended to form a part of any Agreement and are included for display purposes only. E.O.E. July 2022.

MDM
MDM DEVELOPMENTS

The Cork

2 Bed, 2 Bath

Interior 1114 SF
Exterior 629 SF
Total 1743 SF



Floor 12

Porta

BELLEVILLE WATERFRONT LIVING

Floor plans are intended to give a general indication of the proposed layout only. Architectural, structural, and mechanical layouts are subject to change without notice. All materials, specifications, details and dimensions, if any, are approximate and subject to change by the Vendor without notice to the Purchaser in order to comply with building site conditions and municipal, structural, Vendor, and/or architectural requirements. Actual usable floor space may vary from the stated floor area in accordance with Bulletin 22 published by the Tarion Warranty Corporation. Bulkheads are not shown on this plan and may be located in areas of the Unit as required. All exterior spaces shown, if any, are exclusive use common elements shown for display purposes only and the location and size are subject to change by the Vendor without notice to the Purchaser. Window location, size and type may vary without notice to the Purchaser.

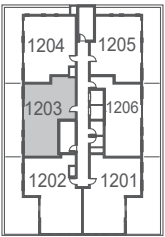
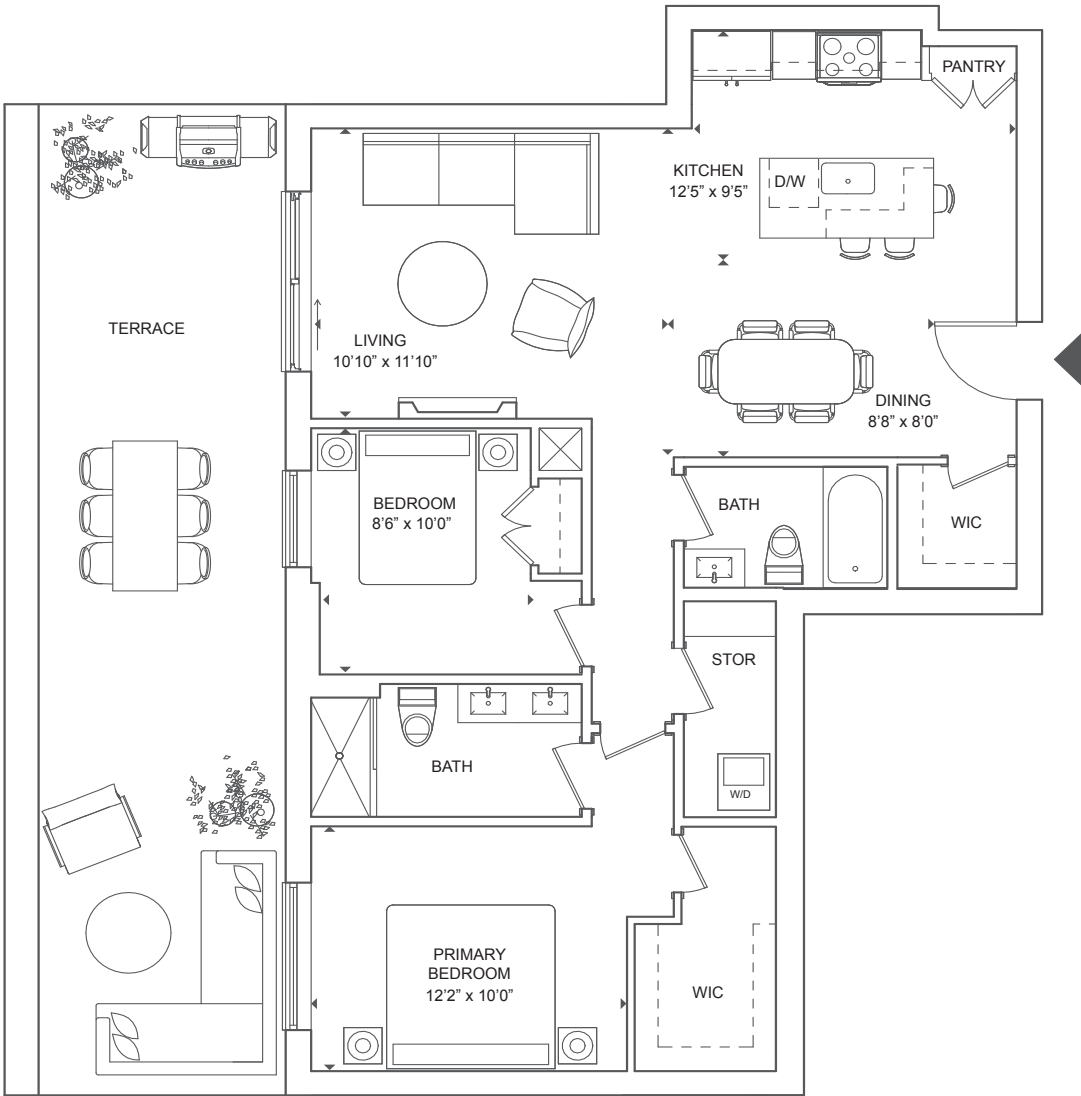
Certain floors may have less floor space due to thicker structural members, mechanical rooms, etc. This plan supersedes any marketing plan or material. Furniture and fixture representations are for illustration purposes only and do not reflect electrical plans for the suite. All suites are sold unfurnished. All measurements are calculated in accordance with industry accepted standards. All images and dimensions are not intended to form a part of any Agreement and are included for display purposes only. E.O.E. July 2022.



The Fumé

2 Bed, 2 Bath

Interior 1029 SF
Exterior 427 SF
Total 1456 SF



Floor 12

Porta

BELLEVILLE WATERFRONT LIVING

Floor plans are intended to give a general indication of the proposed layout only. Architectural, structural, and mechanical layouts are subject to change without notice. All materials, specifications, details and dimensions, if any, are approximate and subject to change by the Vendor without notice to the Purchaser in order to comply with building site conditions and municipal, structural, Vendor, and/or architectural requirements. Actual usable floor space may vary from the stated floor area in accordance with Bulletin 22 published by the Tarion Warranty Corporation. Bulkheads are not shown on this plan and may be located in areas of the Unit as required. All exterior spaces shown, if any, are exclusive use common elements shown for display purposes only and the location and size are subject to change by the Vendor without notice to the Purchaser. Window location, size and type may vary without notice to the Purchaser.

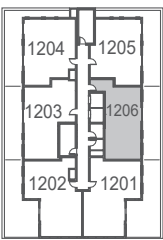
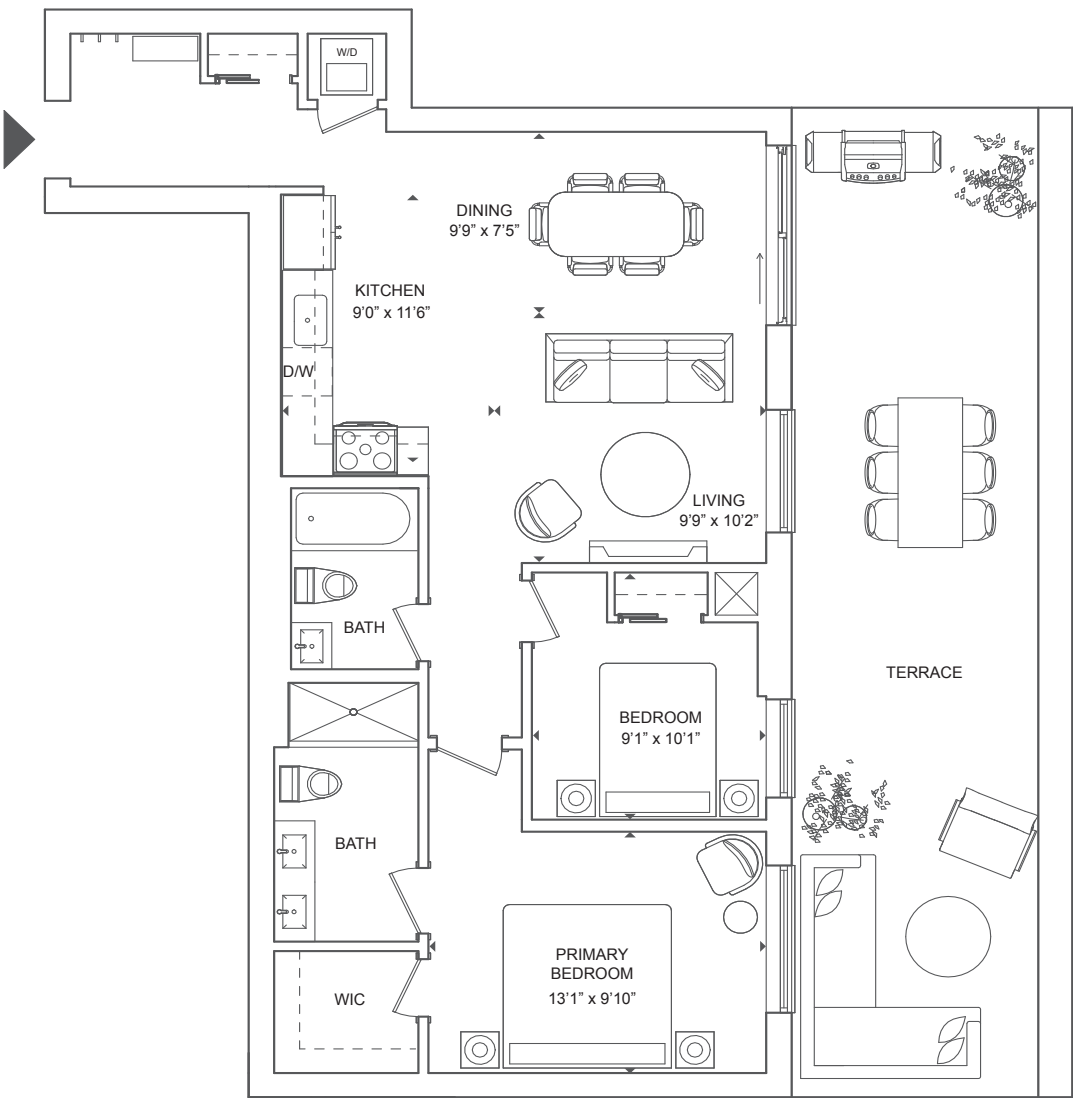
Certain floors may have less floor space due to thicker structural members, mechanical rooms, etc. This plan supersedes any marketing plan or material. Furniture and fixture representations are for illustration purposes only and do not reflect electrical plans for the suite. All suites are sold unfurnished. All measurements are calculated in accordance with industry accepted standards. All images and dimensions are not intended to form a part of any Agreement and are included for display purposes only. E.O.E. July 2022.



The Decant

2 Bed, 2 Bath

Interior 910 SF
Exterior 427 SF
Total 1337 SF



Floor 12

Porta

BELLEVILLE WATERFRONT LIVING

Floor plans are intended to give a general indication of the proposed layout only. Architectural, structural, and mechanical layouts are subject to change without notice. All materials, specifications, details and dimensions, if any, are approximate and subject to change by the Vendor without notice to the Purchaser in order to comply with building site conditions and municipal, structural, Vendor, and/or architectural requirements. Actual usable floor space may vary from the stated floor area in accordance with Bulletin 22 published by the Tarion Warranty Corporation. Bulkheads are not shown on this plan and may be located in areas of the Unit as required. All exterior spaces shown, if any, are exclusive use common elements shown for display purposes only and the location and size are subject to change by the Vendor without notice to the Purchaser. Window location, size and type may vary without notice to the Purchaser.

Certain floors may have less floor space due to thicker structural members, mechanical rooms, etc. This plan supersedes any marketing plan or material. Furniture and fixture representations are for illustration purposes only and do not reflect electrical plans for the suite. All suites are sold unfurnished. All measurements are calculated in accordance with industry accepted standards. All images and dimensions are not intended to form a part of any Agreement and are included for display purposes only. E.O.E. July 2022.

MDM
MDM DEVELOPMENTS