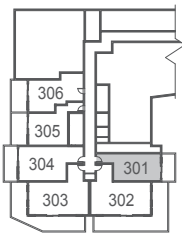
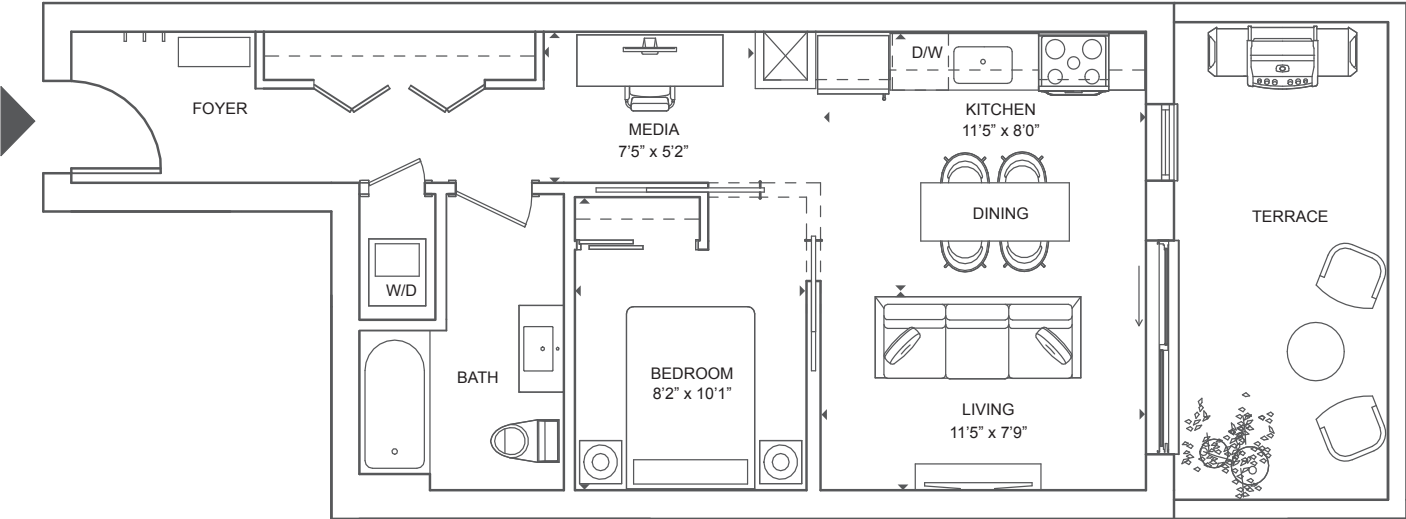


The Pinot

1 Bed + Media, 1 Bath

Interior 574 SF
Exterior 144 SF
Total 718 SF



Floor 3

Porta

BELLEVILLE WATERFRONT LIVING

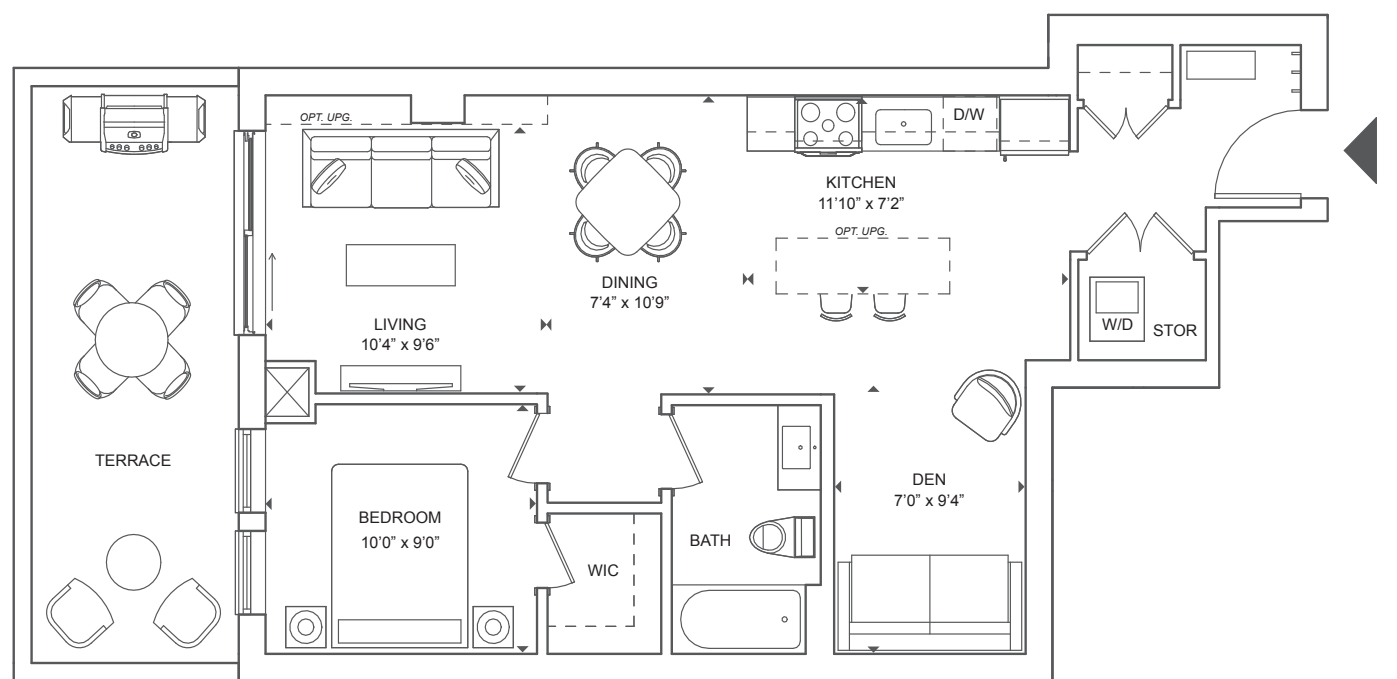
Floor plans are intended to give a general indication of the proposed layout only. Architectural, structural, and mechanical layouts are subject to change without notice. All materials, specifications, details and dimensions, if any, are approximate and subject to change by the Vendor without notice to the Purchaser in order to comply with building site conditions and municipal, structural, Vendor, and/or architectural requirements. Actual usable floor space may vary from the stated floor area in accordance with Bulletin 22 published by the Tarion Warranty Corporation. Bulkheads are not shown on this plan and may be located in areas of the Unit as required. All exterior spaces shown, if any, are exclusive use common elements shown for display purposes only and the location and size are subject to change by the Vendor without notice to the Purchaser. Window location, size and type may vary without notice to the Purchaser.

Certain floors may have less floor space due to thicker structural members, mechanical rooms, etc. This plan supersedes any marketing plan or material. Furniture and fixture representations are for illustration purposes only and do not reflect electrical plans for the suite. All suites are sold unfurnished. All measurements are calculated in accordance with industry accepted standards. All images and dimensions are not intended to form a part of any Agreement and are included for display purposes only. E.O.E. July 2022.

The Grigio

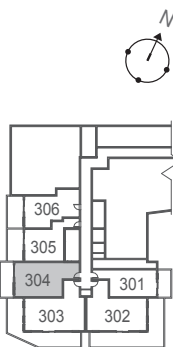
1 Bed + Den, 1 Bath

Interior 737 SF
Exterior 182 SF
Total 919 SF



Porta

BELLEVILLE WATERFRONT LIVING



Floor 3

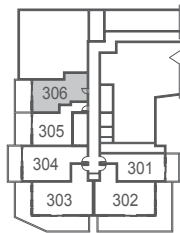
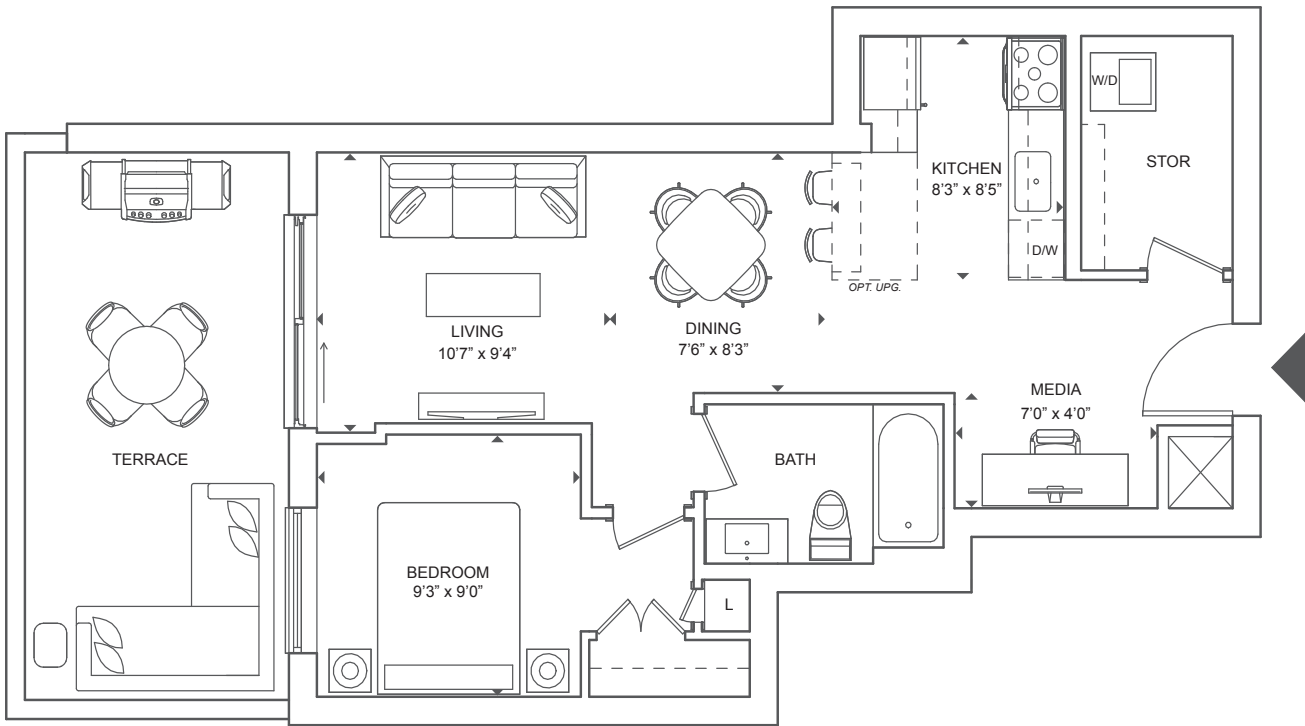
Floor plans are intended to give a general indication of the proposed layout only. Architectural, structural, and mechanical layouts are subject to change without notice. All materials, specifications, details and dimensions, if any, are approximate and subject to change by the Vendor without notice to the Purchaser in order to comply with building site conditions and municipal, structural, Vendor, and/or architectural requirements. Actual usable floor space may vary from the stated floor area in accordance with Bulletin 22 published by the Tarion Warranty Corporation. Bulkheads are not shown on this plan and may be located in areas of the Unit as required. All exterior spaces shown, if any, are exclusive use common elements shown for display purposes only and the location and size are subject to change by the Vendor without notice to the Purchaser. Window location, size and type may vary without notice to the Purchaser.

Certain floors may have less floor space due to thicker structural members, mechanical rooms, etc. This plan supersedes any marketing plan or material. Furniture and fixture representations are for illustration purposes only and do not reflect electrical plans for the suite. All suites are sold unfurnished. All measurements are calculated in accordance with industry accepted standards. All images and dimensions are not intended to form a part of any Agreement and are included for display purposes only. E.O.E. July 2022.

The Noir

1 Bed + Media, 1 Bath

Interior 650 SF
Exterior 200 SF
Total 850 SF



Floor 3

Porta

BELLEVILLE WATERFRONT LIVING

Floor plans are intended to give a general indication of the proposed layout only. Architectural, structural, and mechanical layouts are subject to change without notice. All materials, specifications, details and dimensions, if any, are approximate and subject to change by the Vendor without notice to the Purchaser in order to comply with building site conditions and municipal, structural, Vendor, and/or architectural requirements. Actual usable floor space may vary from the stated floor area in accordance with Bulletin 22 published by the Tarion Warranty Corporation. Bulkheads are not shown on this plan and may be located in areas of the Unit as required. All exterior spaces shown, if any, are exclusive use common elements shown for display purposes only and the location and size are subject to change by the Vendor without notice to the Purchaser. Window location, size and type may vary without notice to the Purchaser.

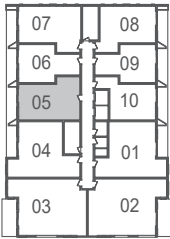
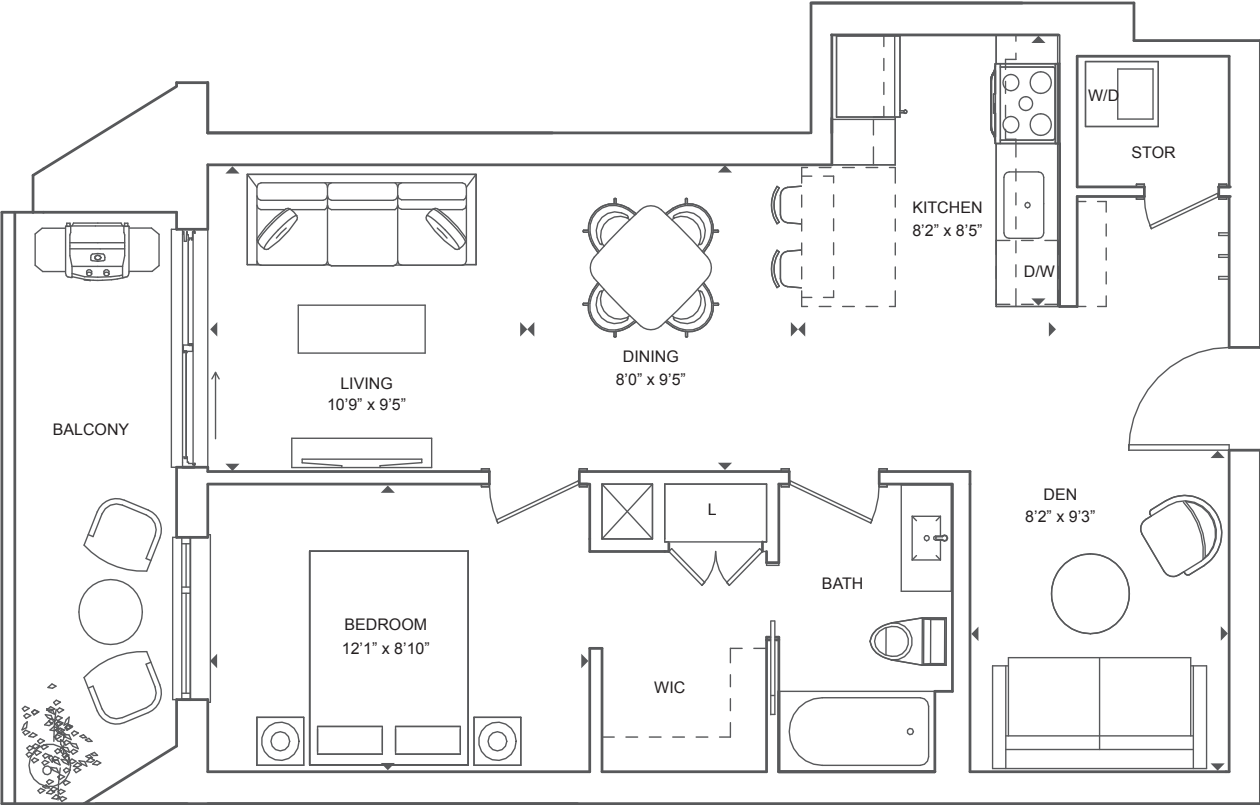
Certain floors may have less floor space due to thicker structural members, mechanical rooms, etc. This plan supersedes any marketing plan or material. Furniture and fixture representations are for illustration purposes only and do not reflect electrical plans for the suite. All suites are sold unfurnished. All measurements are calculated in accordance with industry accepted standards. All images and dimensions are not intended to form a part of any Agreement and are included for display purposes only. E.O.E. July 2022.



The Blend

1 Bed + Den, 1 Bath

Interior 744 SF
Exterior 100 SF
Total 844 SF



Porta

BELLEVILLE WATERFRONT LIVING

Floors 4-11

Floor plans are intended to give a general indication of the proposed layout only. Architectural, structural, and mechanical layouts are subject to change without notice. All materials, specifications, details and dimensions, if any, are approximate and subject to change by the Vendor without notice to the Purchaser in order to comply with building site conditions and municipal, structural, Vendor, and/or architectural requirements. Actual usable floor space may vary from the stated floor area in accordance with Bulletin 22 published by the Tarion Warranty Corporation. Bulkheads are not shown on this plan and may be located in areas of the Unit as required. All exterior spaces shown, if any, are exclusive use common elements shown for display purposes only and the location and size are subject to change by the Vendor without notice to the Purchaser. Window location, size and type may vary without notice to the Purchaser.

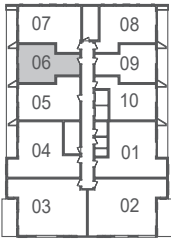
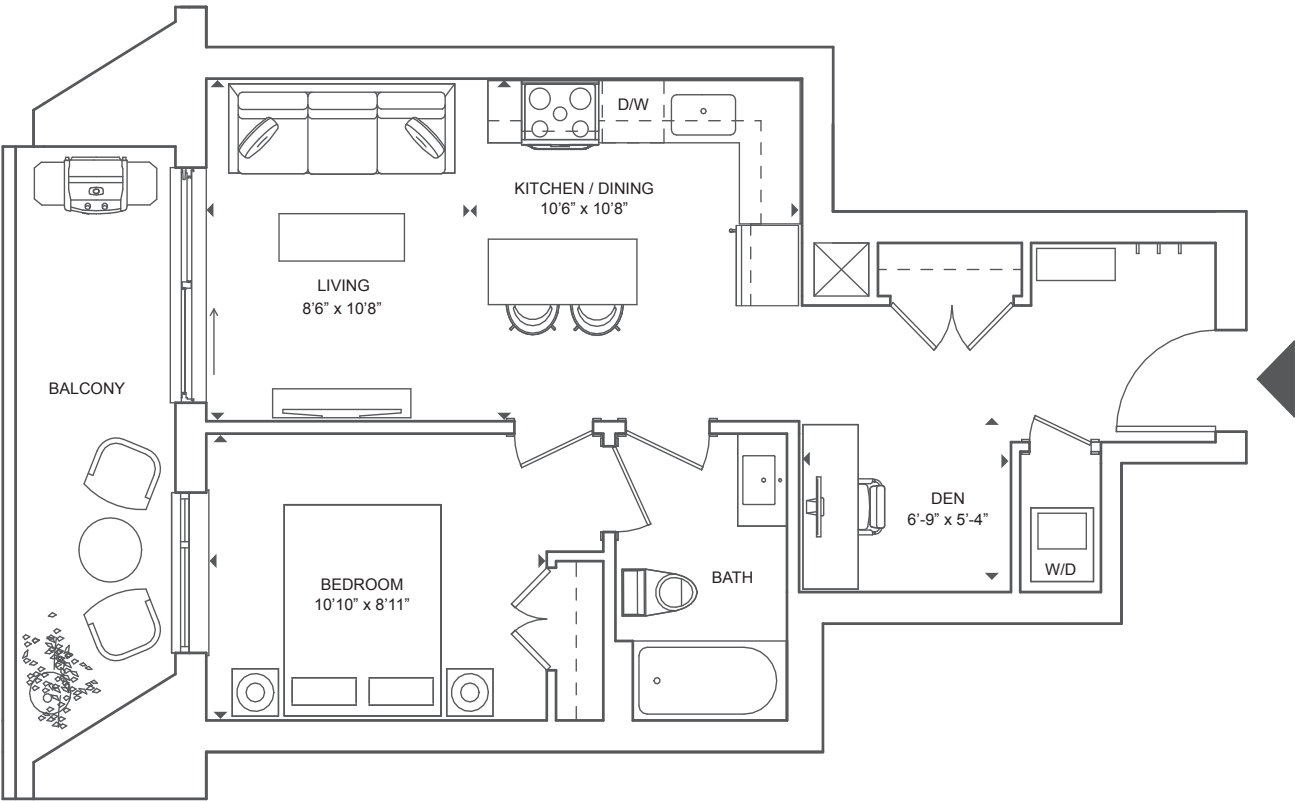
Certain floors may have less floor space due to thicker structural members, mechanical rooms, etc. This plan supersedes any marketing plan or material. Furniture and fixture representations are for illustration purposes only and do not reflect electrical plans for the suite. All suites are sold unfurnished. All measurements are calculated in accordance with industry accepted standards. All images and dimensions are not intended to form a part of any Agreement and are included for display purposes only. E.O.E. July 2022.

MDM
MDM DEVELOPMENTS

The Vine

1 Bed + Den, 1 Bath

Interior 585 SF
Exterior 101 SF
Total 686 SF



Floors 4-11

Porta

BELLEVILLE WATERFRONT LIVING

Floor plans are intended to give a general indication of the proposed layout only. Architectural, structural, and mechanical layouts are subject to change without notice. All materials, specifications, details and dimensions, if any, are approximate and subject to change by the Vendor without notice to the Purchaser in order to comply with building site conditions and municipal, structural, Vendor, and/or architectural requirements. Actual usable floor space may vary from the stated floor area in accordance with Bulletin 22 published by the Tarion Warranty Corporation. Bulkheads are not shown on this plan and may be located in areas of the Unit as required. All exterior spaces shown, if any, are exclusive use common elements shown for display purposes only and the location and size are subject to change by the Vendor without notice to the Purchaser. Window location, size and type may vary without notice to the Purchaser.

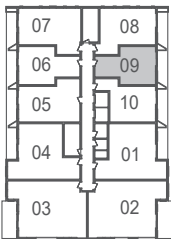
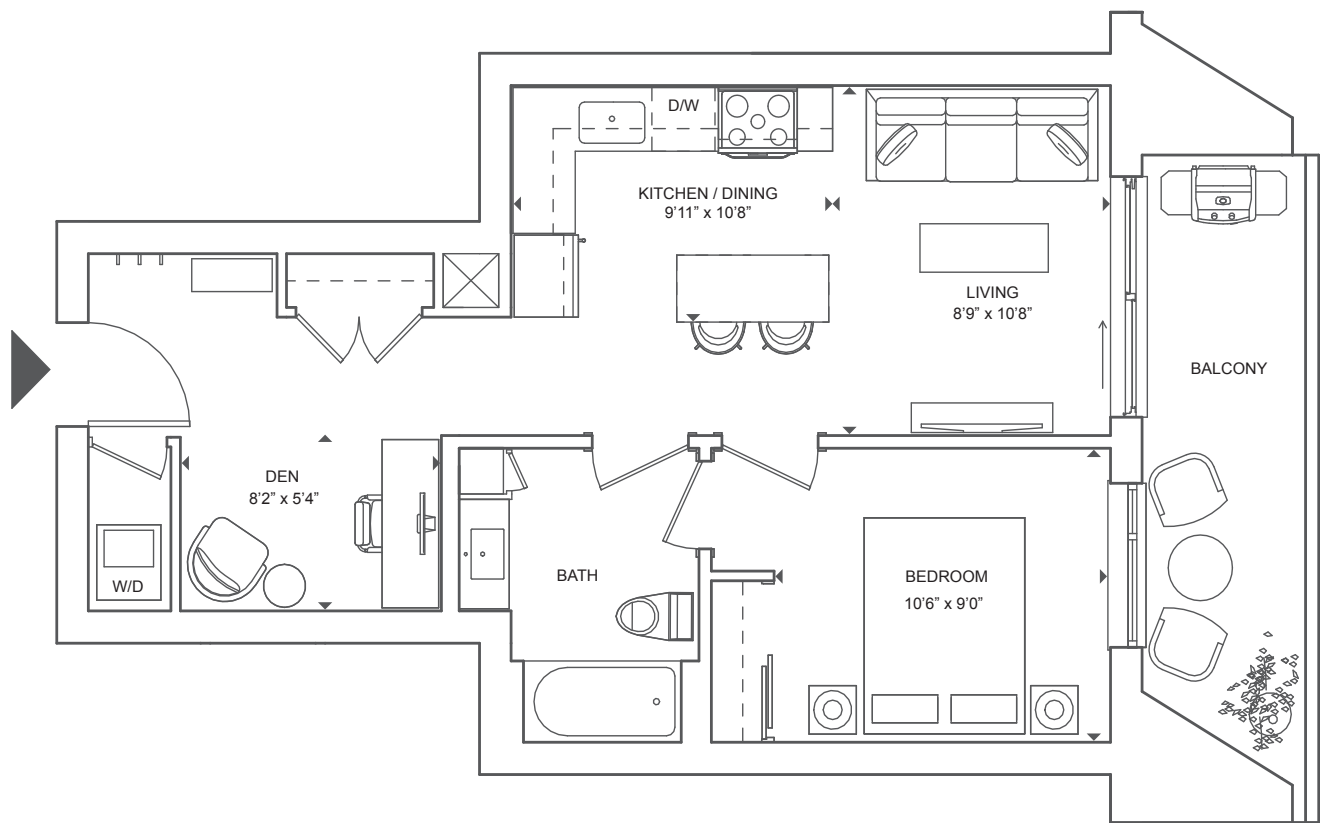
Certain floors may have less floor space due to thicker structural members, mechanical rooms, etc. This plan supersedes any marketing plan or material. Furniture and fixture representations are for illustration purposes only and do not reflect electrical plans for the suite. All suites are sold unfurnished. All measurements are calculated in accordance with industry accepted standards. All images and dimensions are not intended to form a part of any Agreement and are included for display purposes only. E.O.E. July 2022.



The Blush

1 Bed + Den, 1 Bath

Interior 597 SF
Exterior 100 SF
Total 697 SF



Porta

BELLEVILLE WATERFRONT LIVING

Floors 4-11
Accessible Suites

Floor plans are intended to give a general indication of the proposed layout only. Architectural, structural, and mechanical layouts are subject to change without notice. All materials, specifications, details and dimensions, if any, are approximate and subject to change by the Vendor without notice to the Purchaser in order to comply with building site conditions and municipal, structural, Vendor, and/or architectural requirements. Actual usable floor space may vary from the stated floor area in accordance with Bulletin 22 published by the Tarion Warranty Corporation. Bulkheads are not shown on this plan and may be located in areas of the Unit as required. All exterior spaces shown, if any, are exclusive use common elements shown for display purposes only and the location and size are subject to change by the Vendor without notice to the Purchaser. Window location, size and type may vary without notice to the Purchaser.

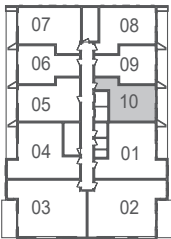
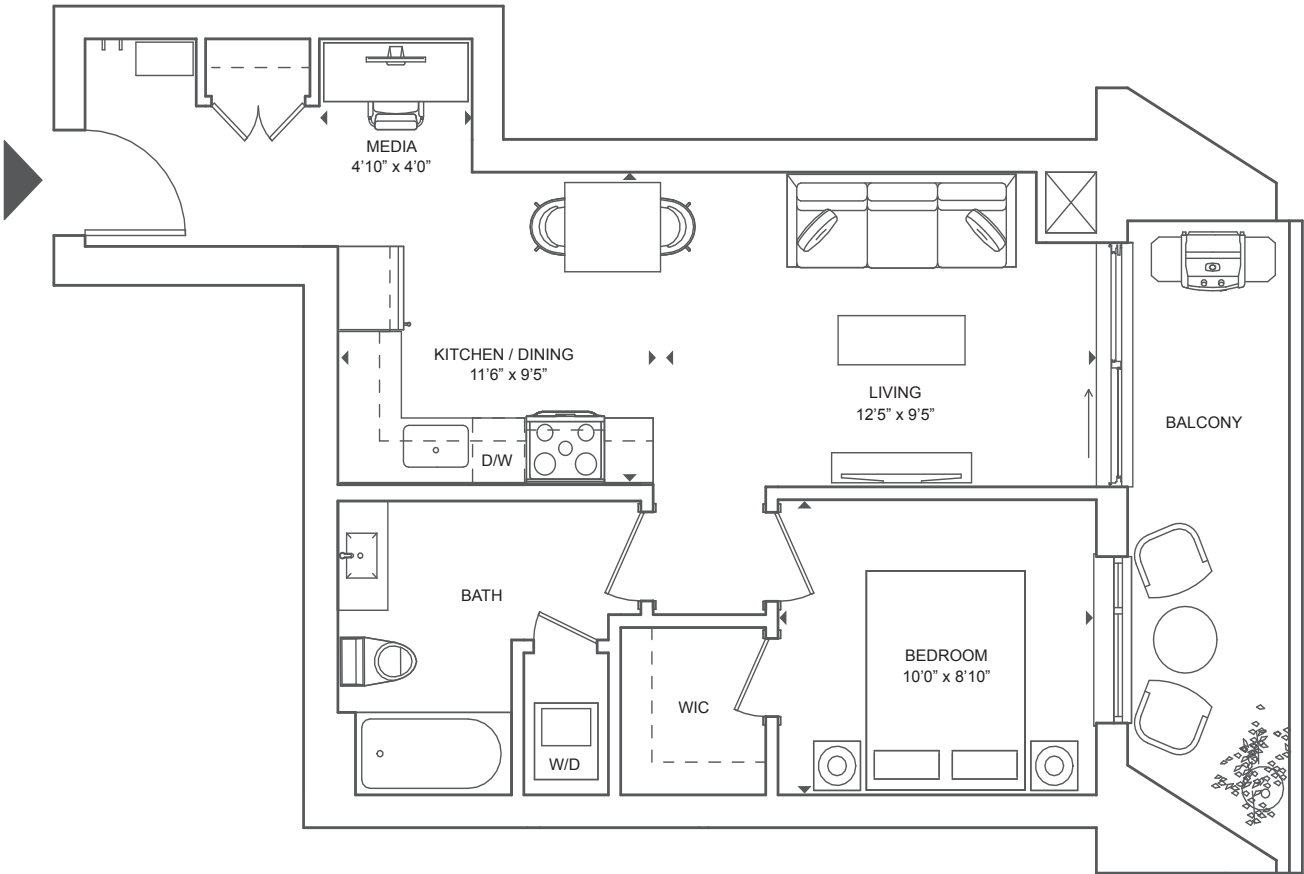
Certain floors may have less floor space due to thicker structural members, mechanical rooms, etc. This plan supersedes any marketing plan or material. Furniture and fixture representations are for illustration purposes only and do not reflect electrical plans for the suite. All suites are sold unfurnished. All measurements are calculated in accordance with industry accepted standards. All images and dimensions are not intended to form a part of any Agreement and are included for display purposes only. E.O.E. July 2022.

MDM
MDM DEVELOPMENTS

The Beaujolais

1 Bed + Media, 1 Bath

Interior 608 SF
Exterior 99 SF
Total 707 SF



Porta

BELLEVILLE WATERFRONT LIVING

Floors 4-11

Floor plans are intended to give a general indication of the proposed layout only. Architectural, structural, and mechanical layouts are subject to change without notice. All materials, specifications, details and dimensions, if any, are approximate and subject to change by the Vendor without notice to the Purchaser in order to comply with building site conditions and municipal, structural, Vendor, and/or architectural requirements. Actual usable floor space may vary from the stated floor area in accordance with Bulletin 22 published by the Tarion Warranty Corporation. Bulkheads are not shown on this plan and may be located in areas of the Unit as required. All exterior spaces shown, if any, are exclusive use common elements shown for display purposes only and the location and size are subject to change by the Vendor without notice to the Purchaser. Window location, size and type may vary without notice to the Purchaser.

Certain floors may have less floor space due to thicker structural members, mechanical rooms, etc. This plan supersedes any marketing plan or material. Furniture and fixture representations are for illustration purposes only and do not reflect electrical plans for the suite. All suites are sold unfurnished. All measurements are calculated in accordance with industry accepted standards. All images and dimensions are not intended to form a part of any Agreement and are included for display purposes only. E.O.E. July 2022.

MDM
MDM DEVELOPMENTS